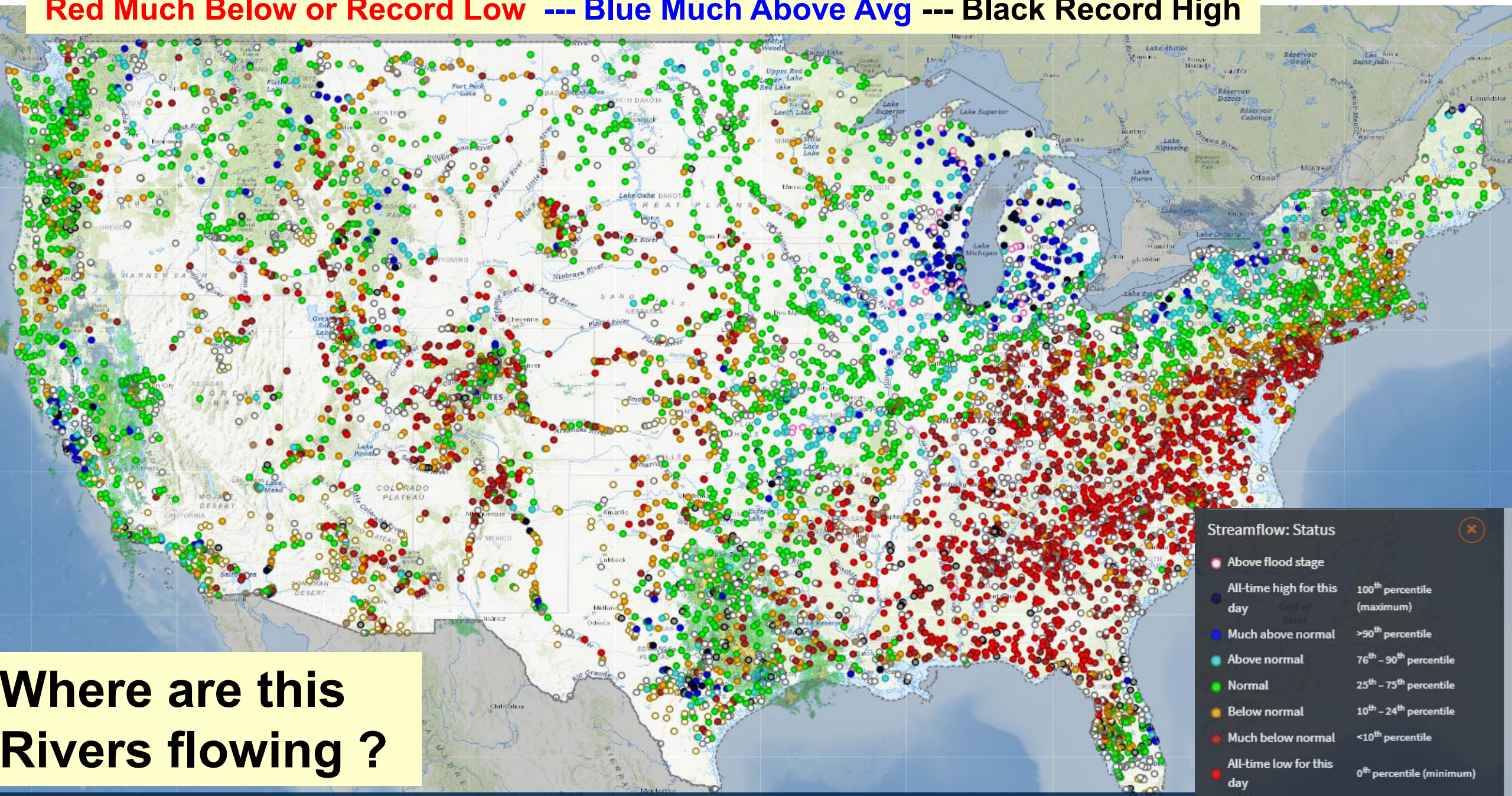


# Snapshot of Current River Flow for June 16, 2026

Red Much Below or Record Low --- Blue Much Above Avg --- Black Record High



Where are this Rivers flowing ?

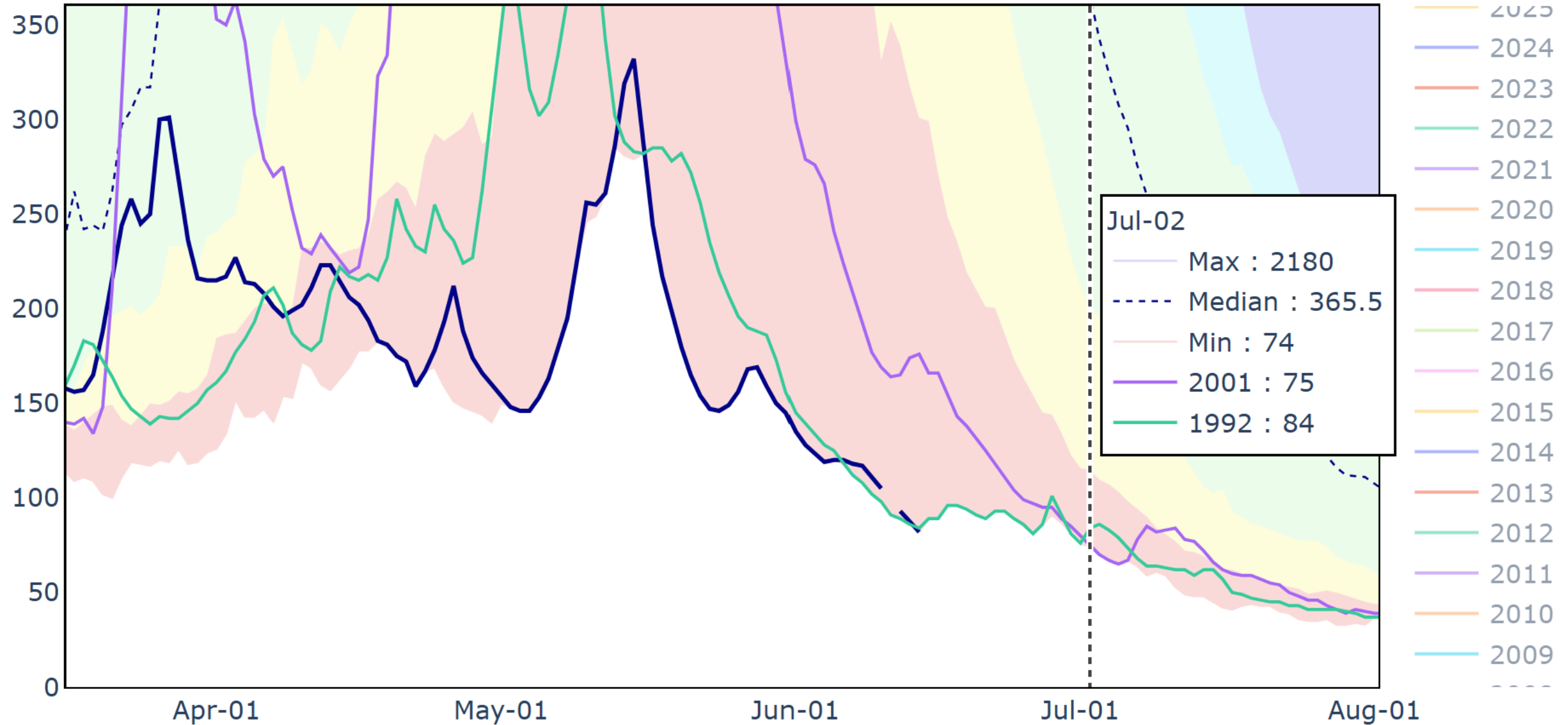
**Streamflow: Status**

- Above flood stage
- All-time high for this day 100<sup>th</sup> percentile (maximum)
- Much above normal >90<sup>th</sup> percentile
- Above normal 76<sup>th</sup> - 90<sup>th</sup> percentile
- Normal 25<sup>th</sup> - 75<sup>th</sup> percentile
- Below normal 10<sup>th</sup> - 24<sup>th</sup> percentile
- Much below normal <10<sup>th</sup> percentile
- All-time low for this day 0<sup>th</sup> percentile (minimum)

# Daily Flow Percentiles 1943-2026

## BRUNEAU RIVER NR HOT SPRING ID (13168500)

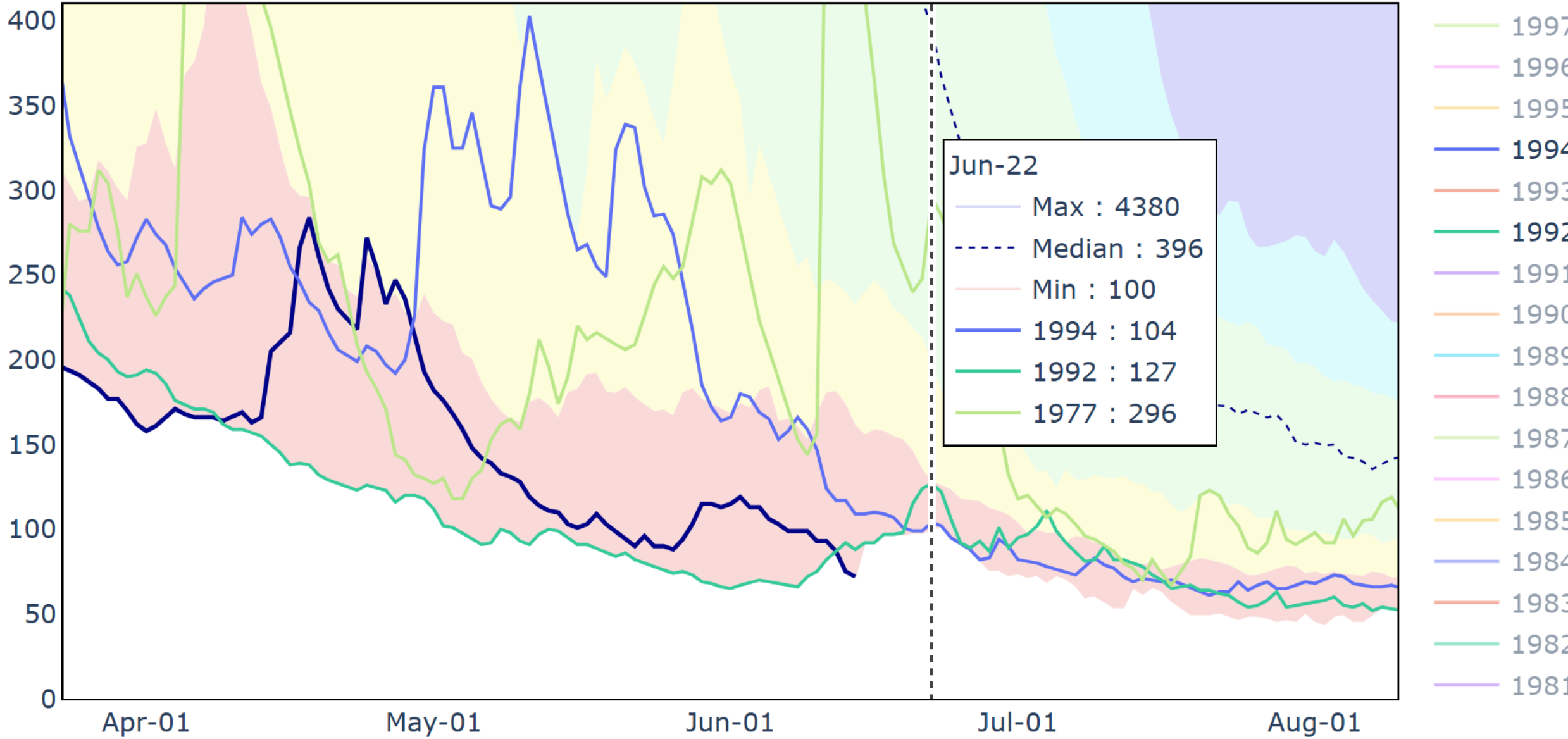
(mean daily CFS)



# Daily Flow Percentiles 1949-2026

## OWYHEE RIVER NR ROME OR (13181000)

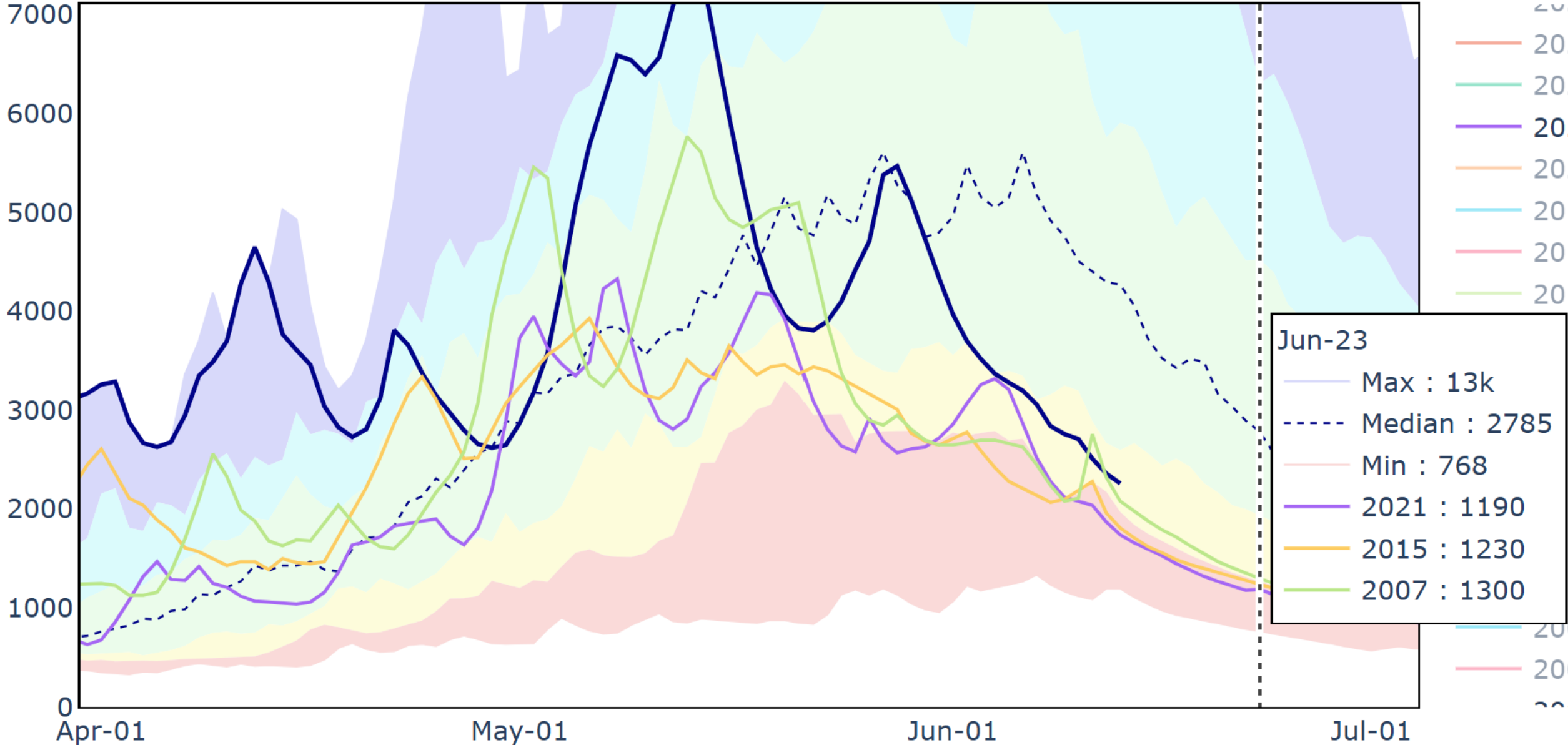
(mean daily CFS)



# Daily Flow Percentiles 1973-2026

## MF SALMON RIVER AT MF LODGE NR YELLOW PINE ID (13309220)

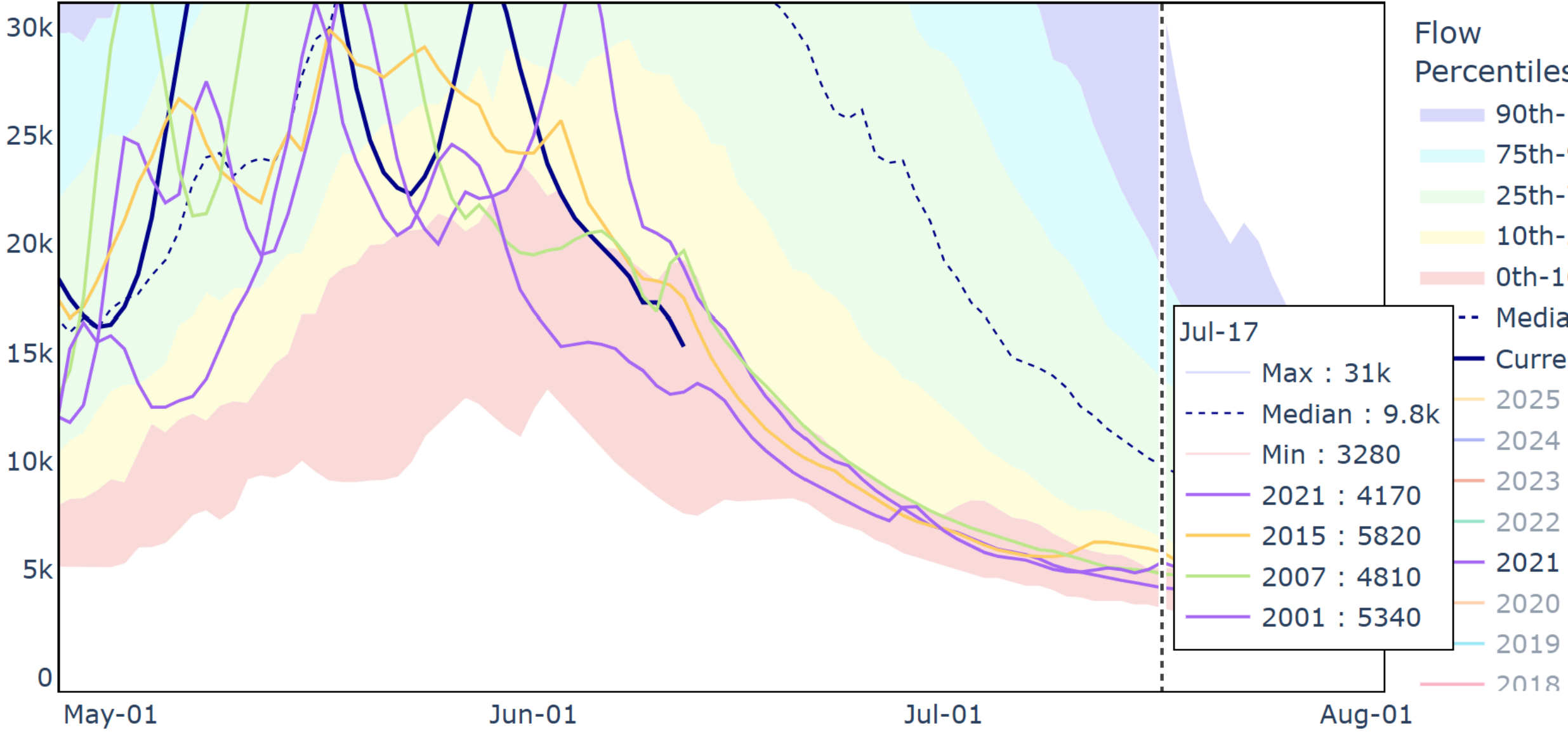
(mean daily CFS)



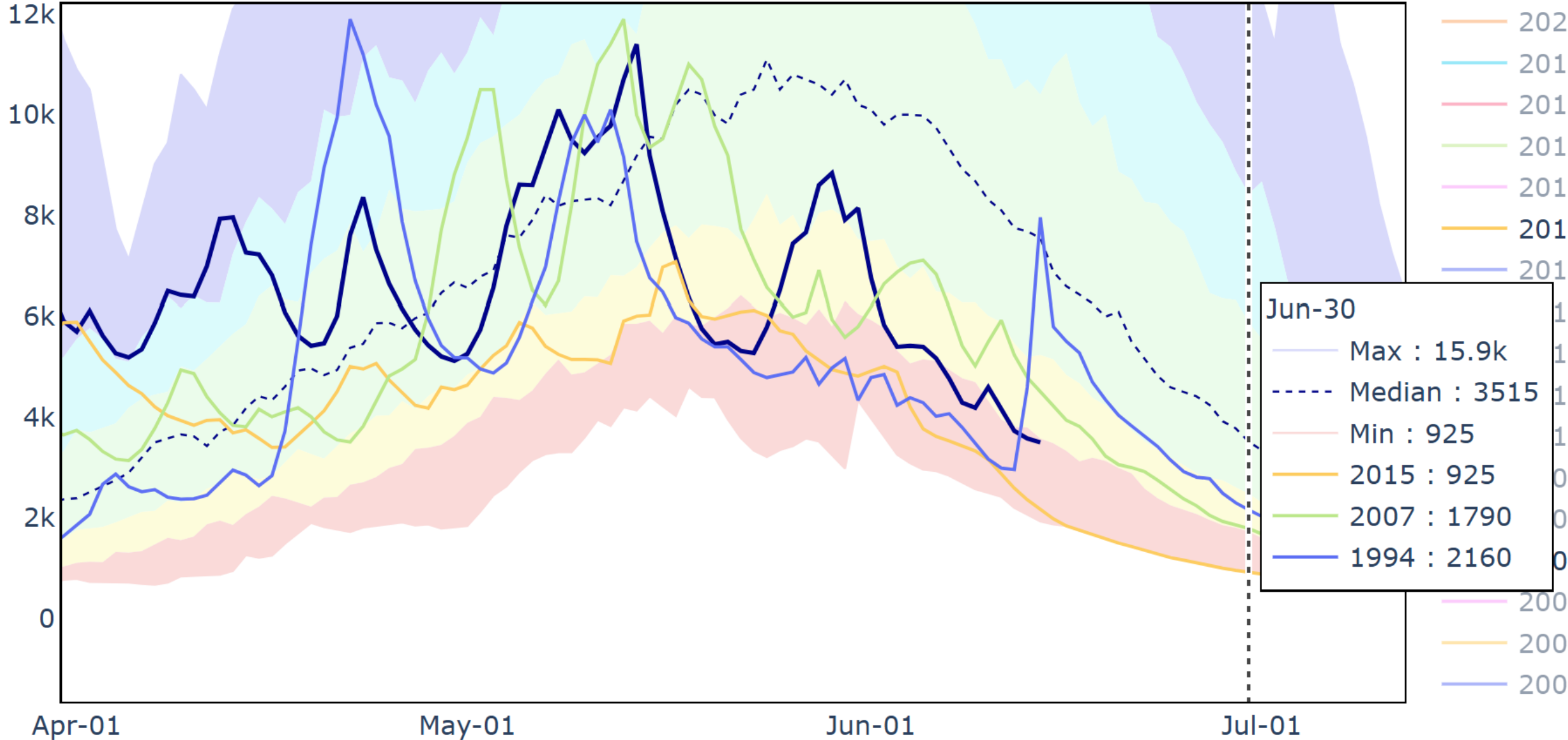
# Daily Flow Percentiles 1926-2026

## SALMON RIVER AT WHITE BIRD ID (13317000)

(mean daily CFS)



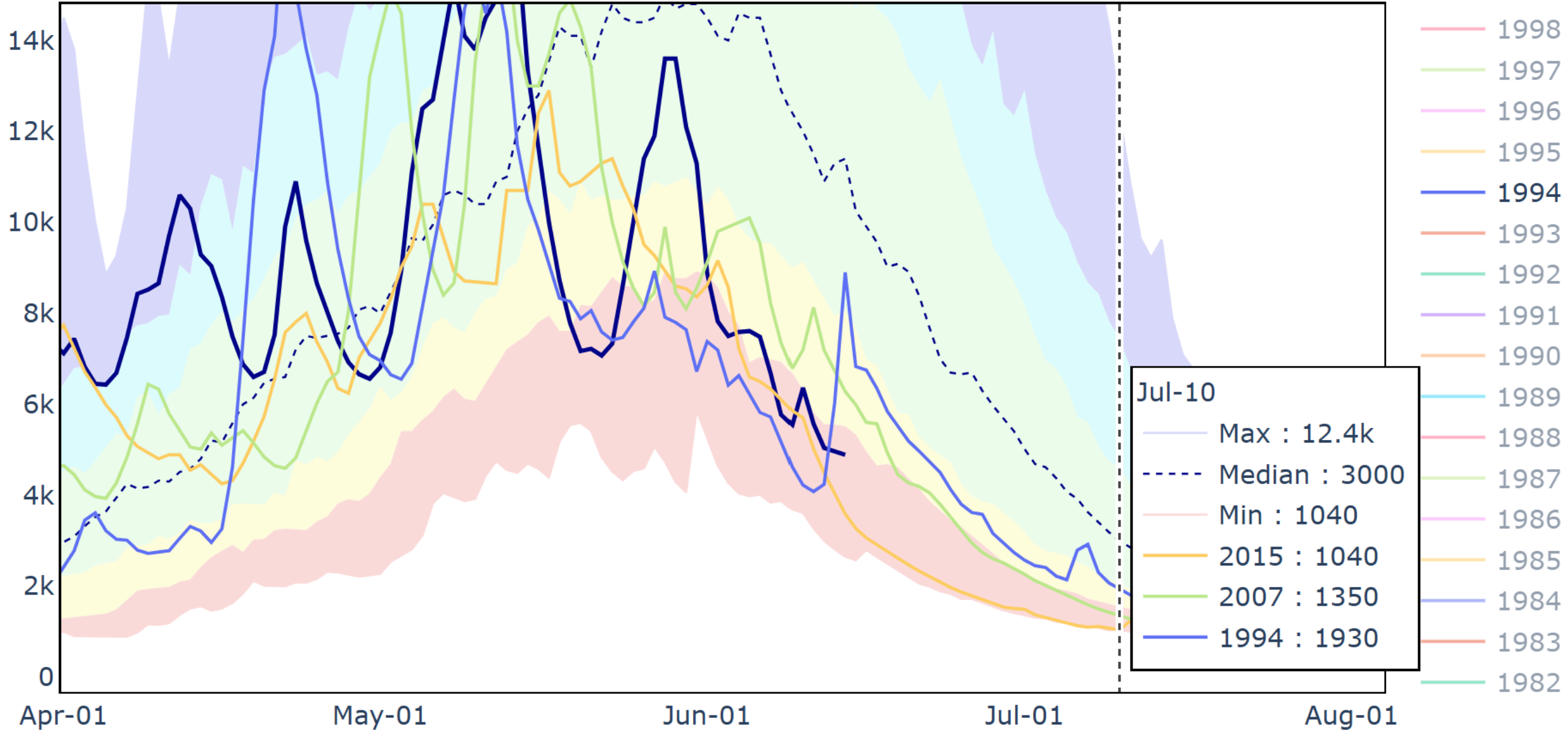
Daily Flow Percentiles 1929-2026  
 LOCHSA RIVER NR LOWELL ID (13337000)  
 (mean daily CFS)



# Daily Flow Percentiles 1929-2026

## SELWAY RIVER NR LOWELL ID (13336500)

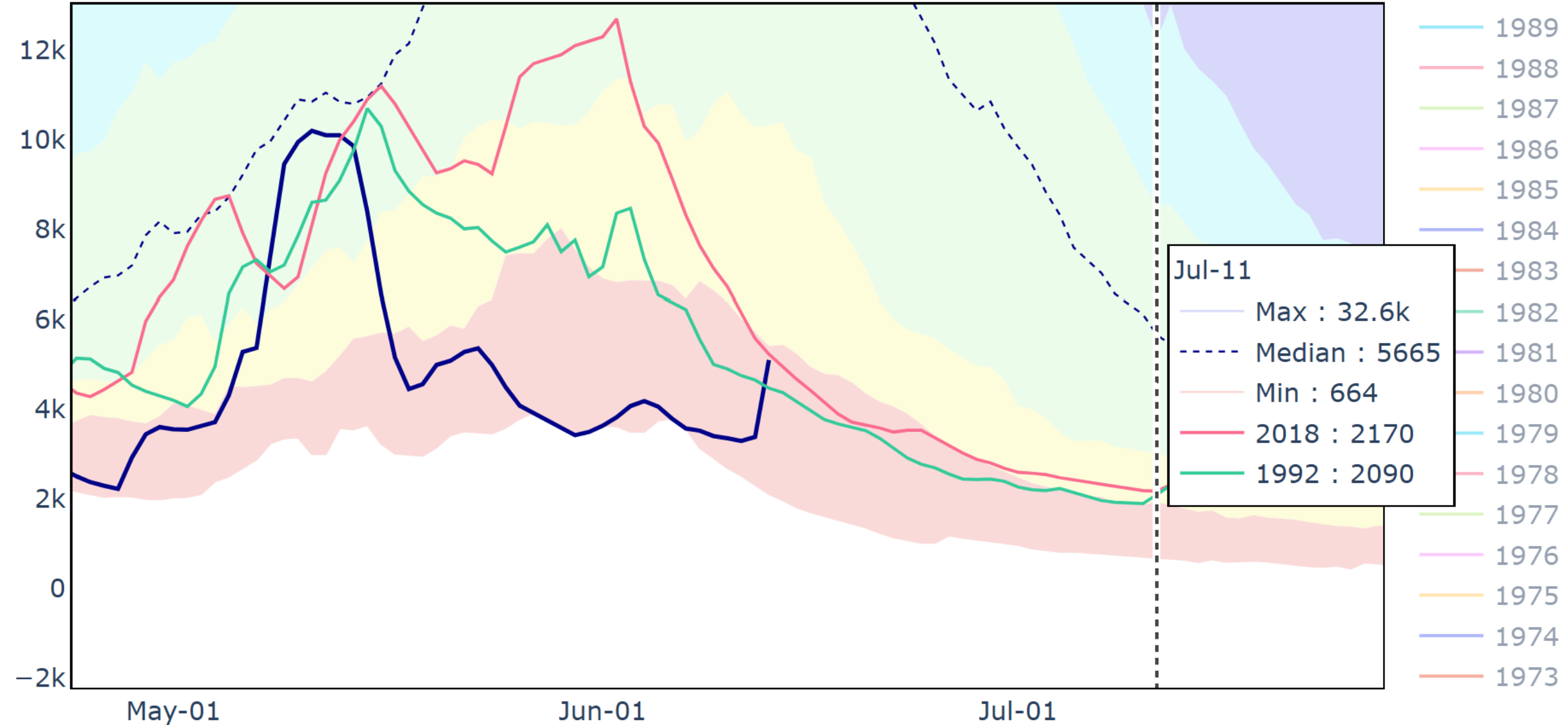
(mean daily CFS)



# Daily Flow Percentiles 1926-2026

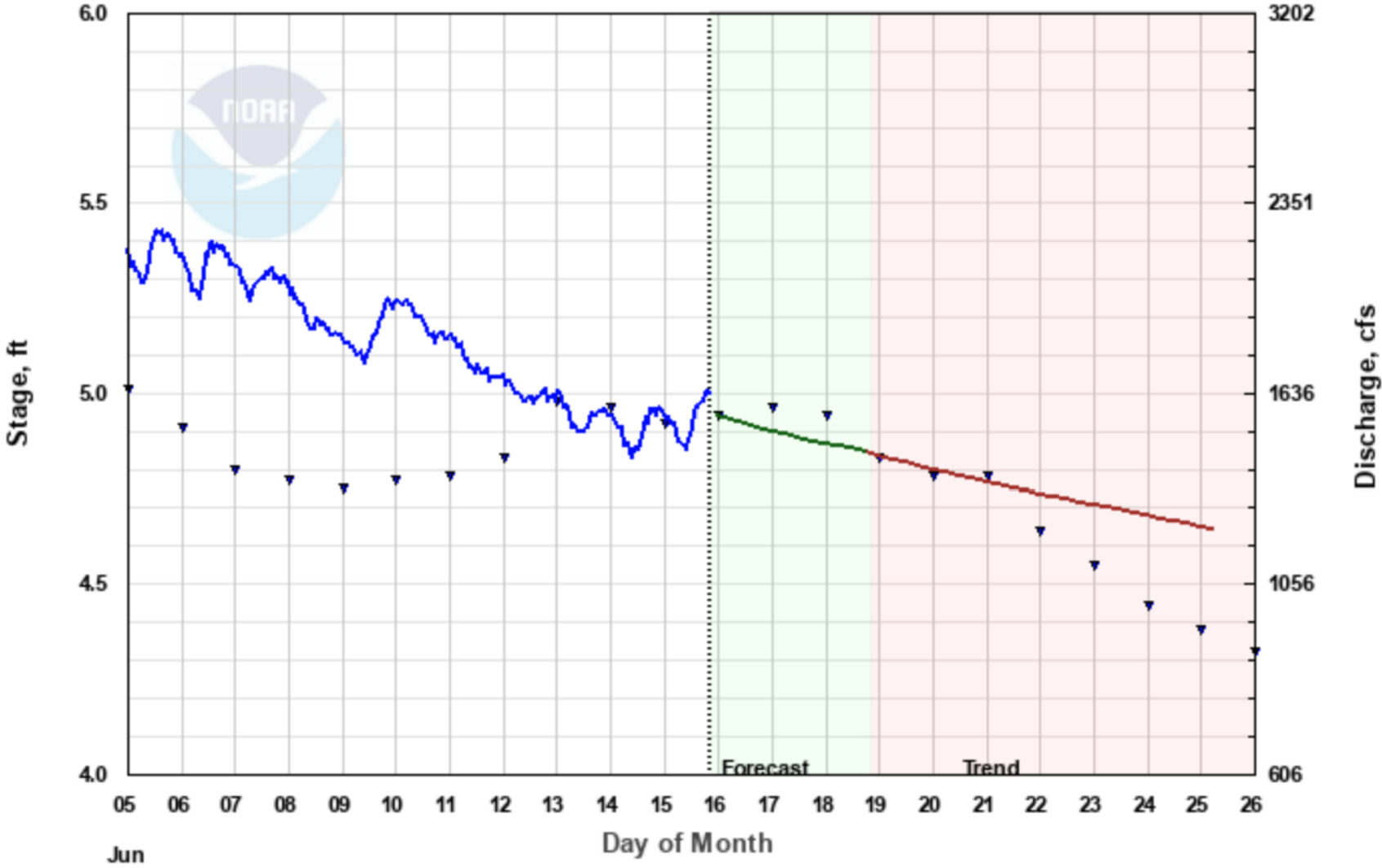
## GREEN RIVER AT GREEN RIVER, UT (09315000)

(mean daily CFS)

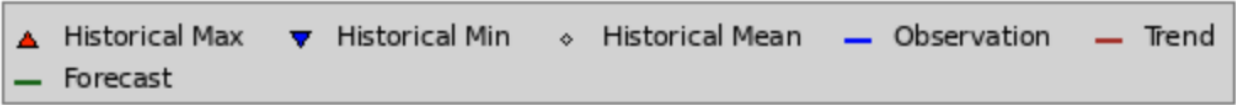


# GRANDE RONDE - TROY (TRYO3)

Latest Observation: 5 ft 06/15/2026 20:00 PDT



**Those little triangles are the daily historic minimum for that day.**

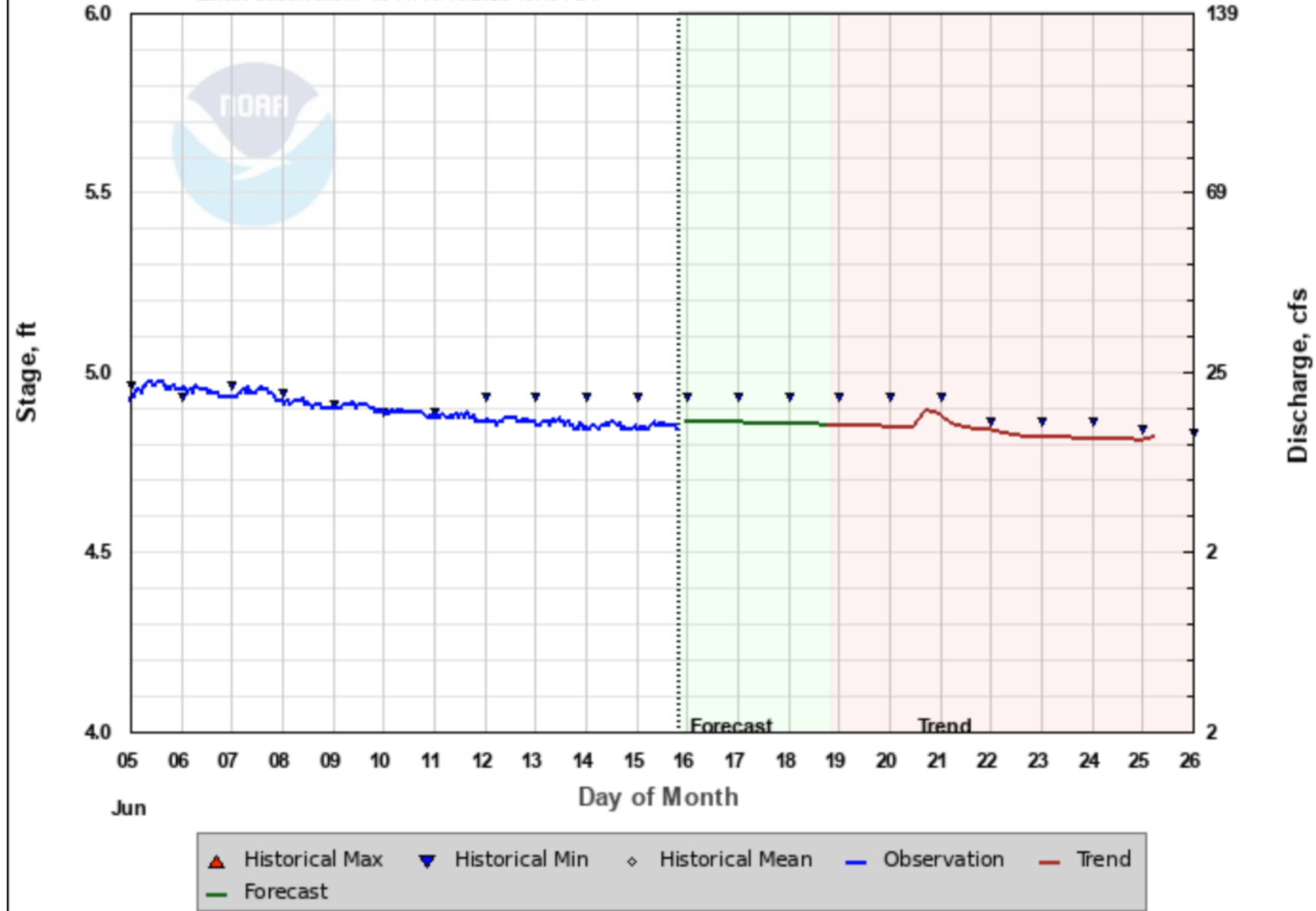


Forecast Created: 06/15/2026 14:30 PDT  
Plot Created: 06/15/2026 20:44 PDT

Observations Provided by US Geological Survey

# SALMON FALLS CREEK - NR SAN JACINTO (SFLN2)

Latest Observation: 4.84 ft 06/15/2026 19:45 PDT



Forecast Created: 06/15/2026 14:59 PDT

Plot Created: 06/15/2026 20:46 PDT

Observations Provided by US Geological Survey