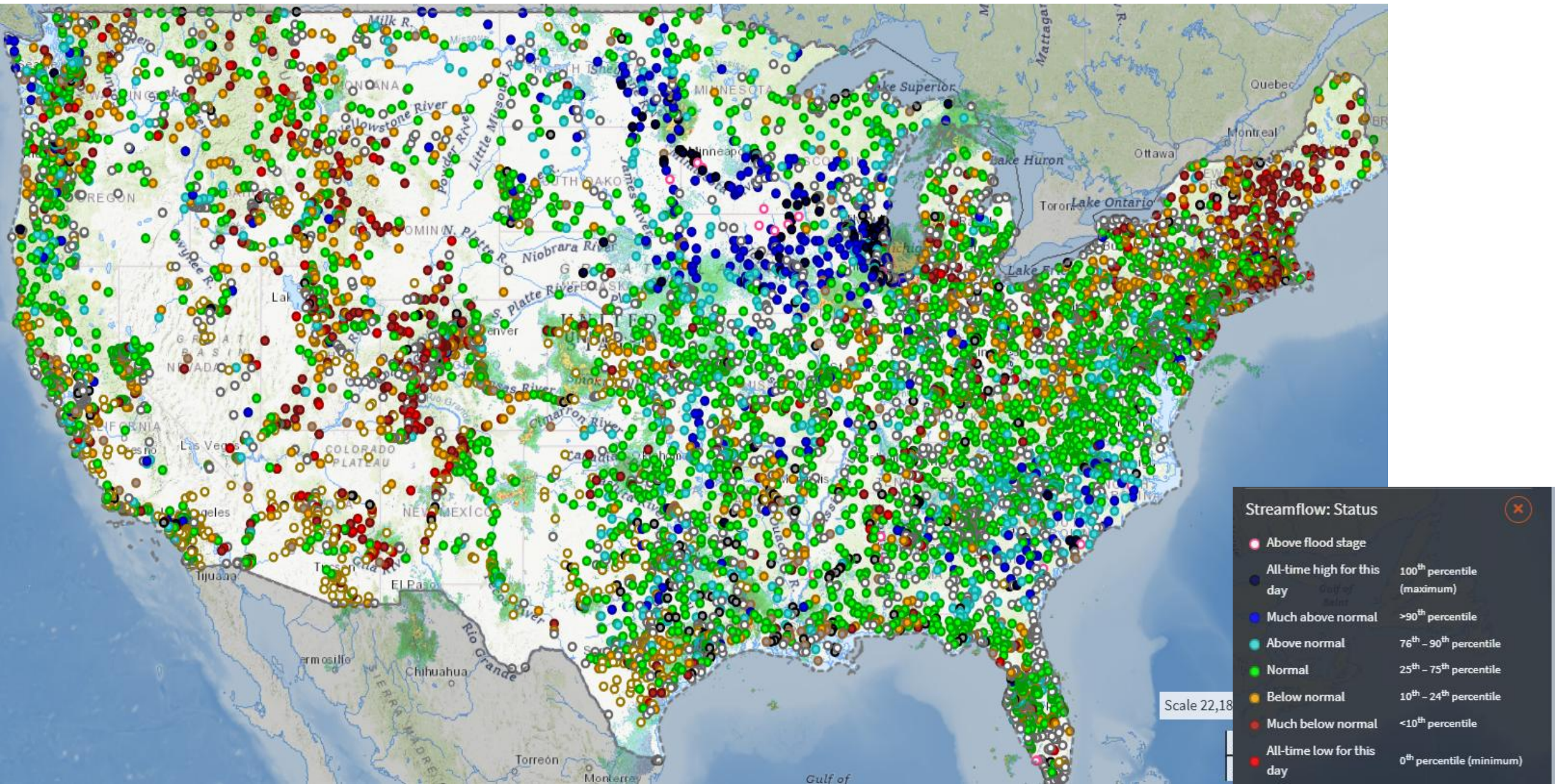
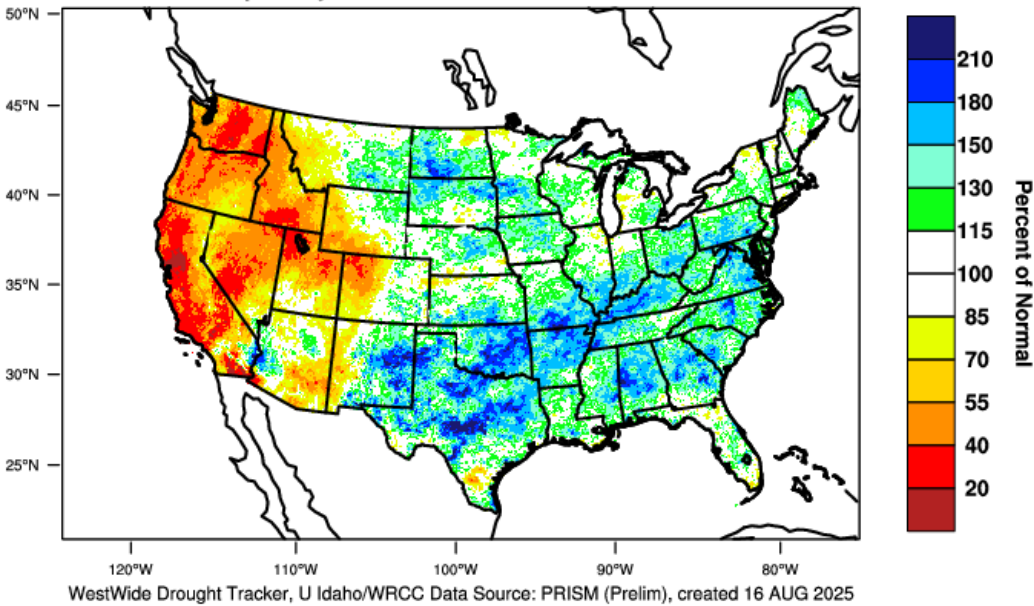


Snapshot of current river flow for August 18, 2025

Red Much Below or Record Low --- Black Record High



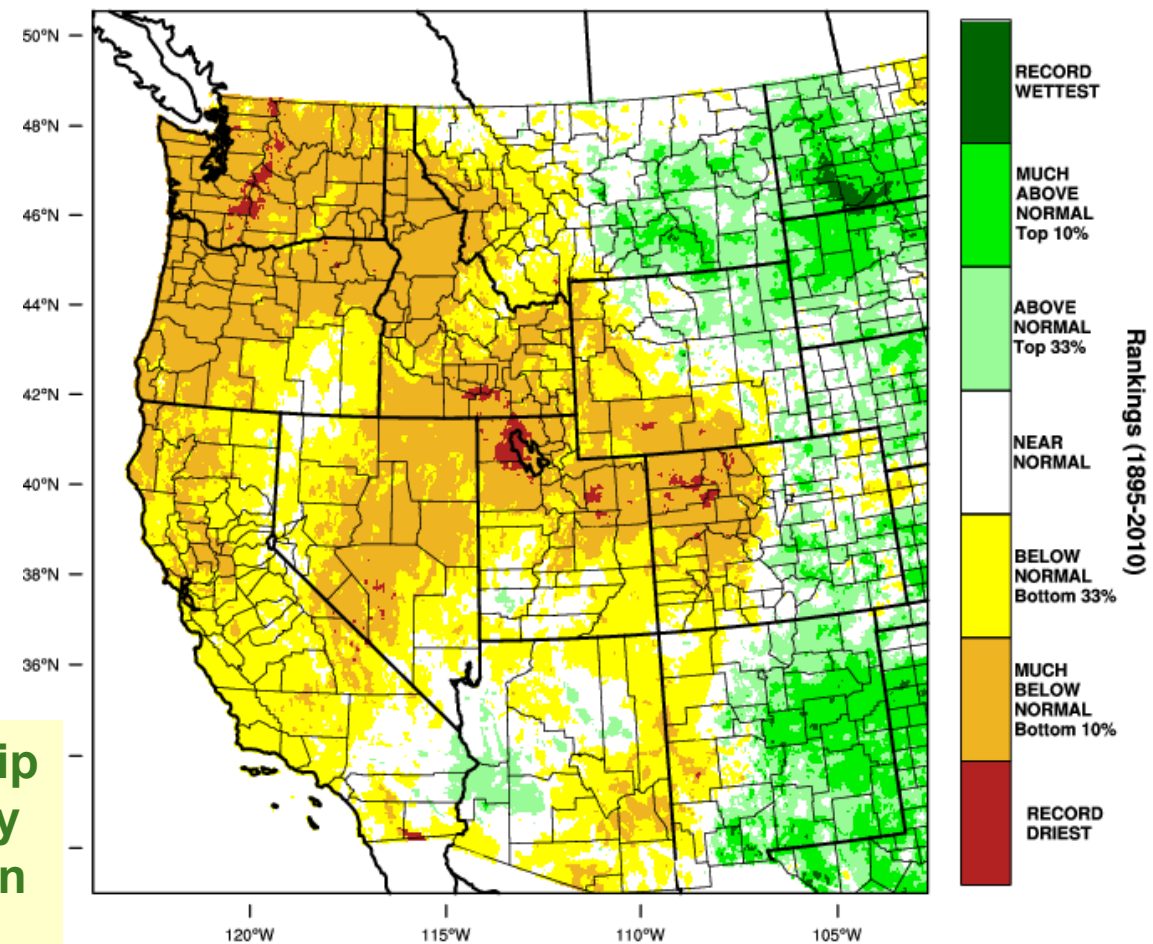
Continental United States - Precipitation
April-July 2025 Percent of 1981-2010 Normal



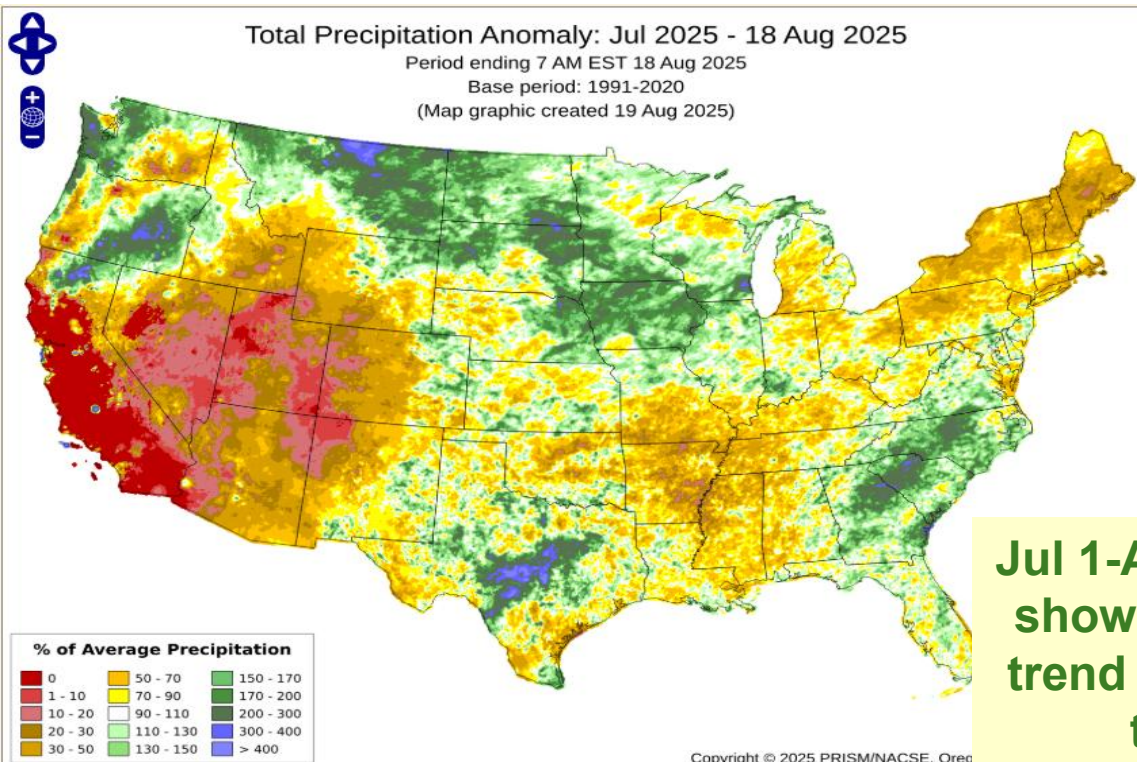
A dry Spring and Summer in the West favored wet in Mid-West and East.

Red is record dry for Ap-Jul precip and tan is much below for much of the West in the bottom 10%ile. Yellow is bottom third precip for the Apr-Jul period.

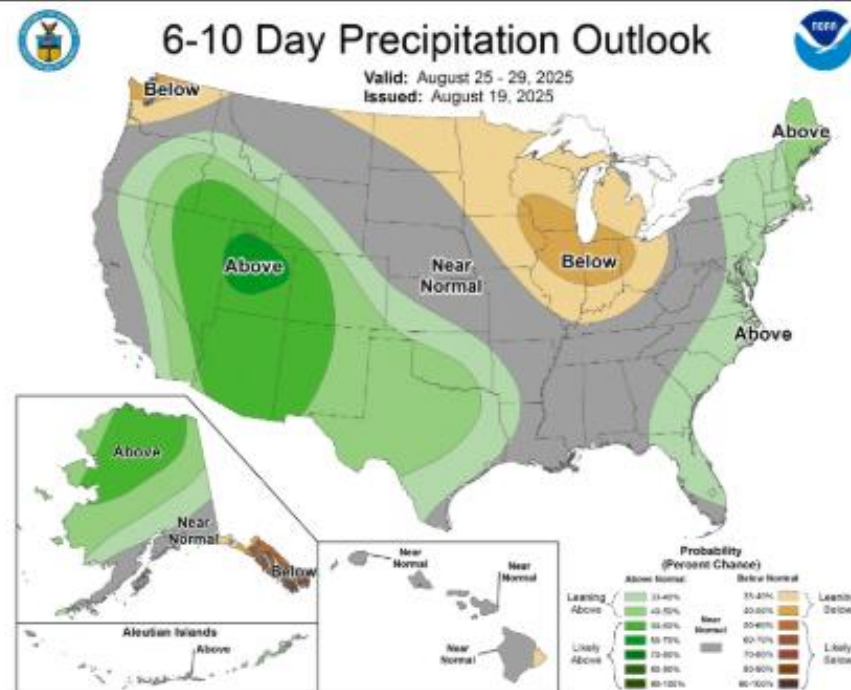
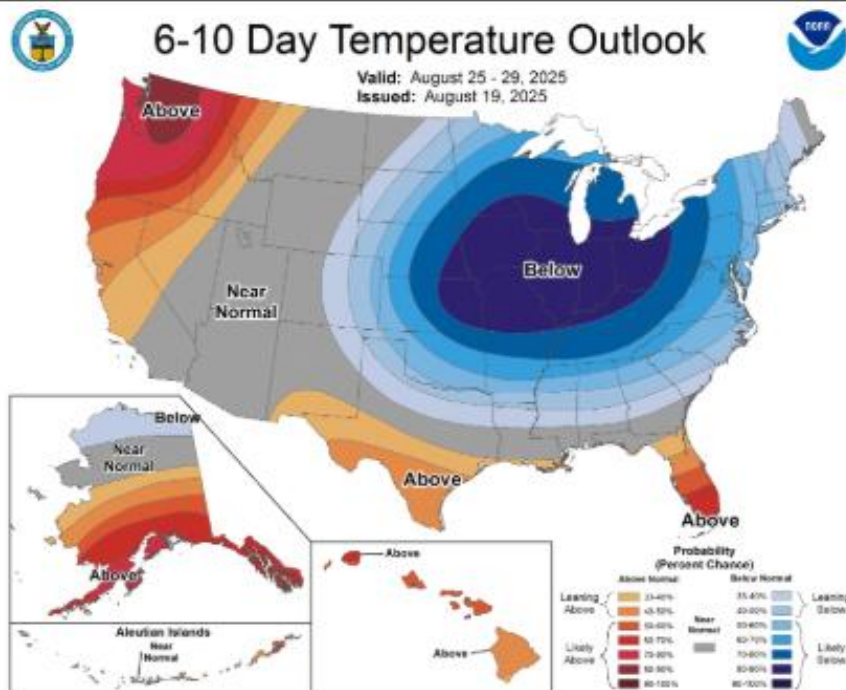
Western United States - Precipitation
April-July 2025 Percentile



Total Precipitation Anomaly: Jul 2025 - 18 Aug 2025
Period ending 7 AM EST 18 Aug 2025
Base period: 1991-2020
(Map graphic created 19 Aug 2025)



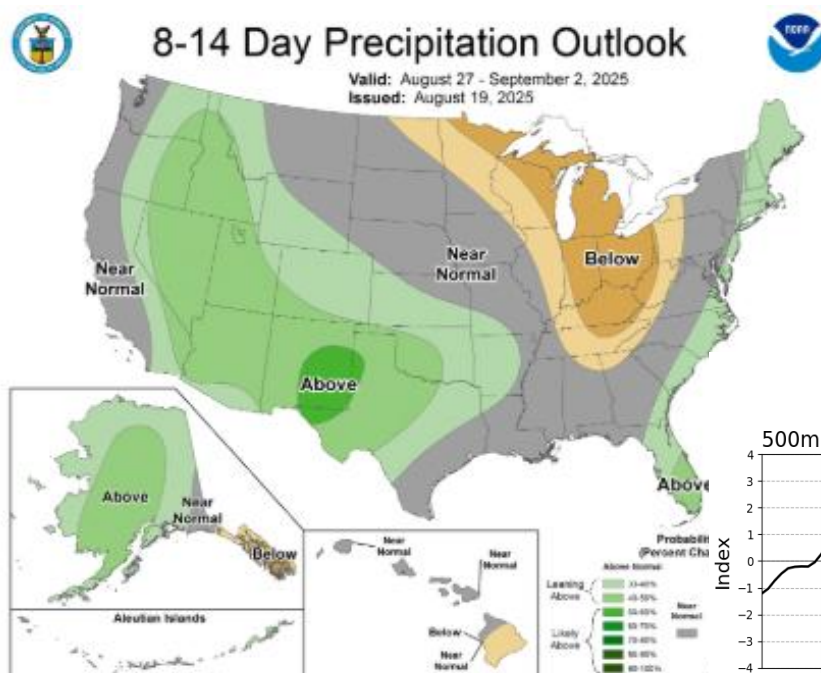
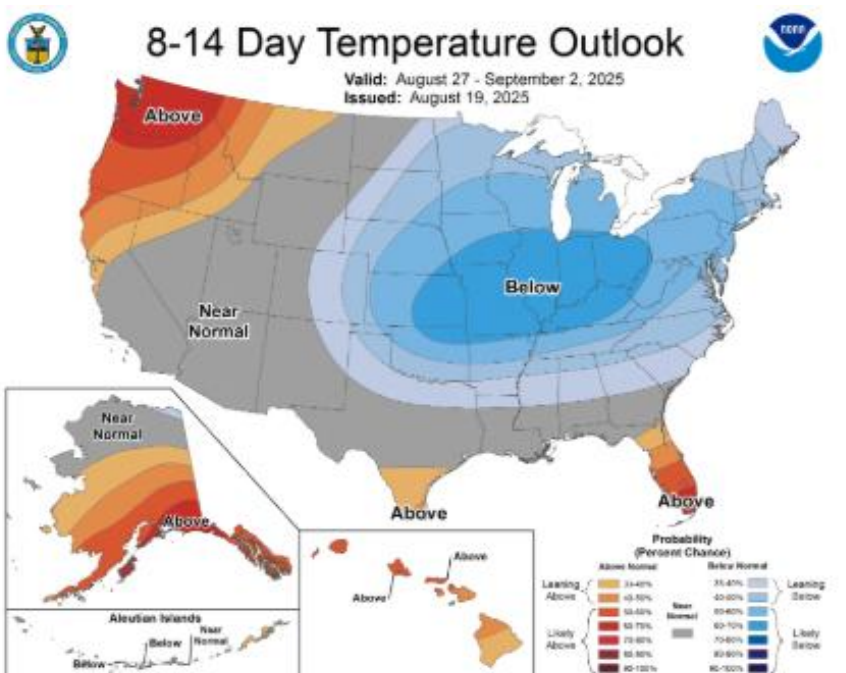
Jul 1-Aug 18 precip shows similar dry trend especially in the SW.



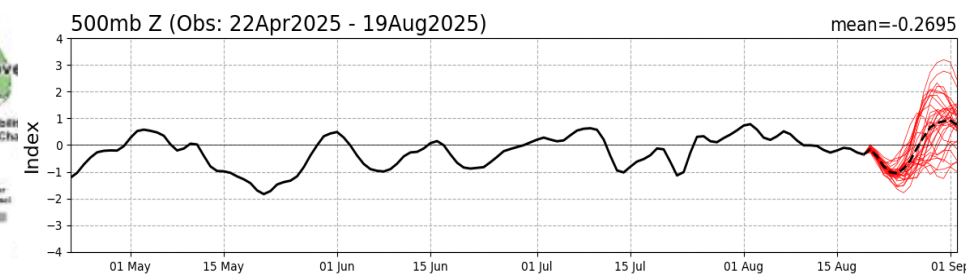
**The Good News –
The Monsoons which were
blocked by a ridge might be
breaking free and allow
much needed moisture in.**

**It will be interesting to see
how intense the monsoons
are with the wild weather all
around us.**

**The PNA is trending
positive which may mean
warm and dry weather as
September arrives.**



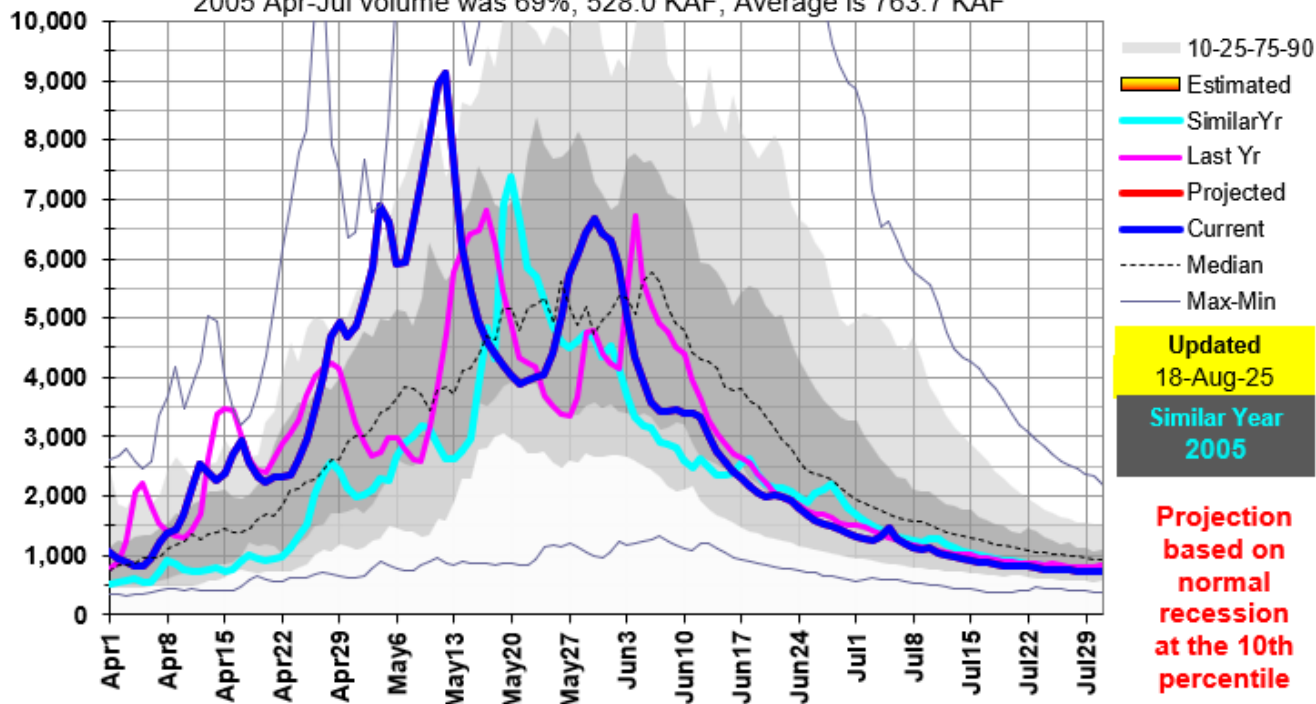
PNA Index: Observed & GEFS Forecasts



13309220: MF Salmon R at MF Lodge near Yellow Pine, ID

2005 Apr-Jul volume was 69%, 528.0 KAF, Average is 763.7 KAF

Mean Daily CFS

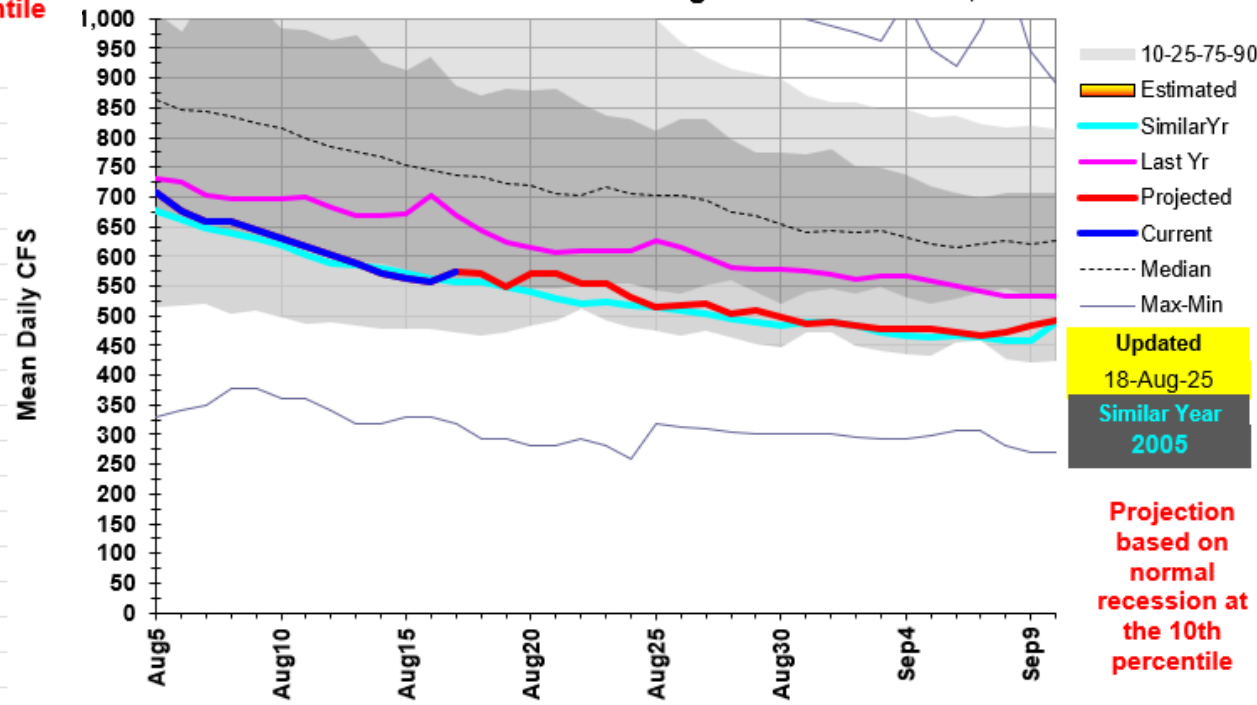


The Dry News –

Following are flow updates for Idaho headwater rivers – many are flowing near 10% tile based on their historic data.

Charts are arranged from North to South and up the Snake.

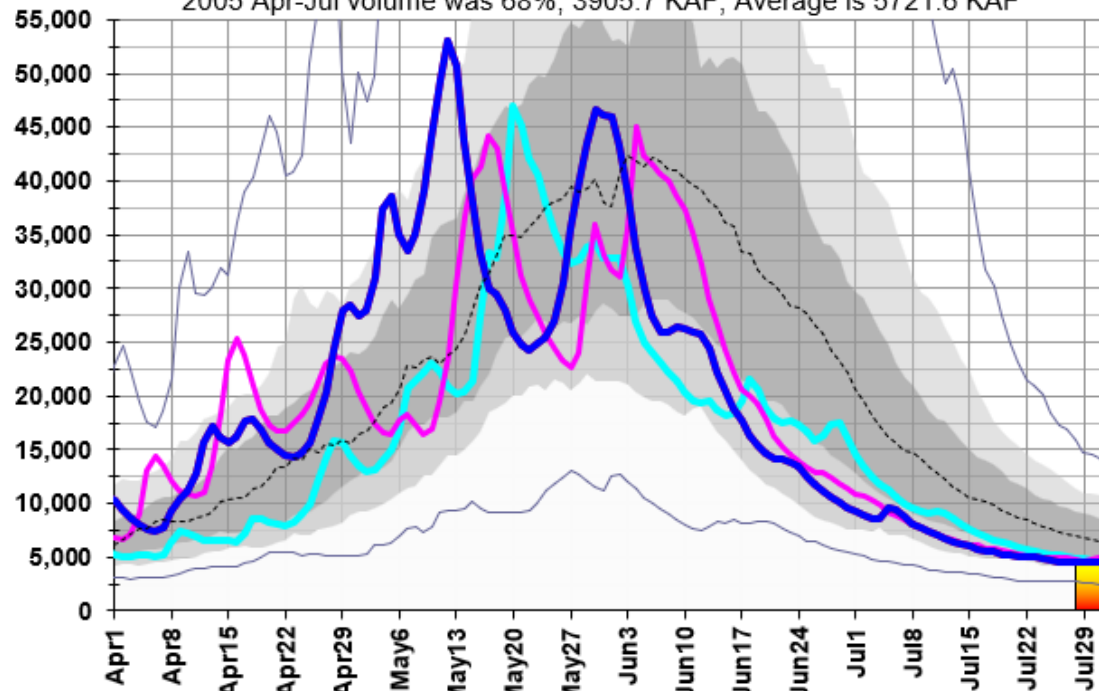
13309220: MF Salmon R at MF Lodge near Yellow Pine, ID



13317000: Salmon R at White Bird, ID

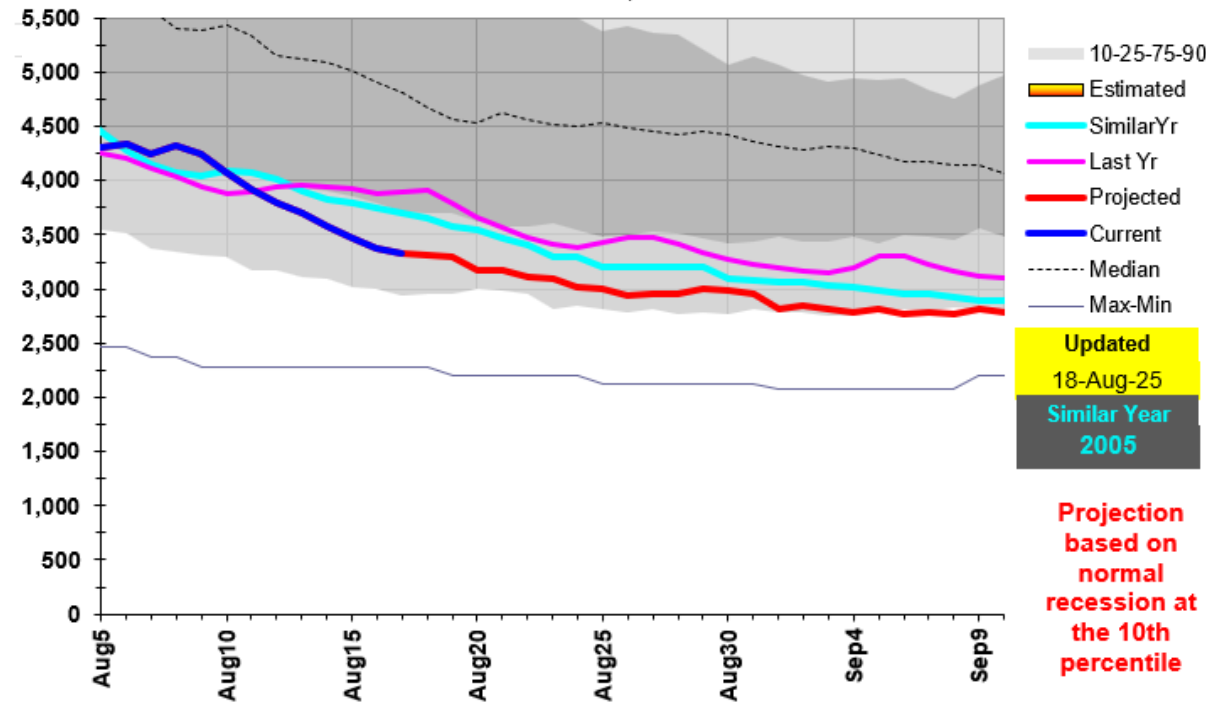
2005 Apr-Jul volume was 68%, 3905.7 KAF, Average is 5721.6 KAF

Mean Daily CFS



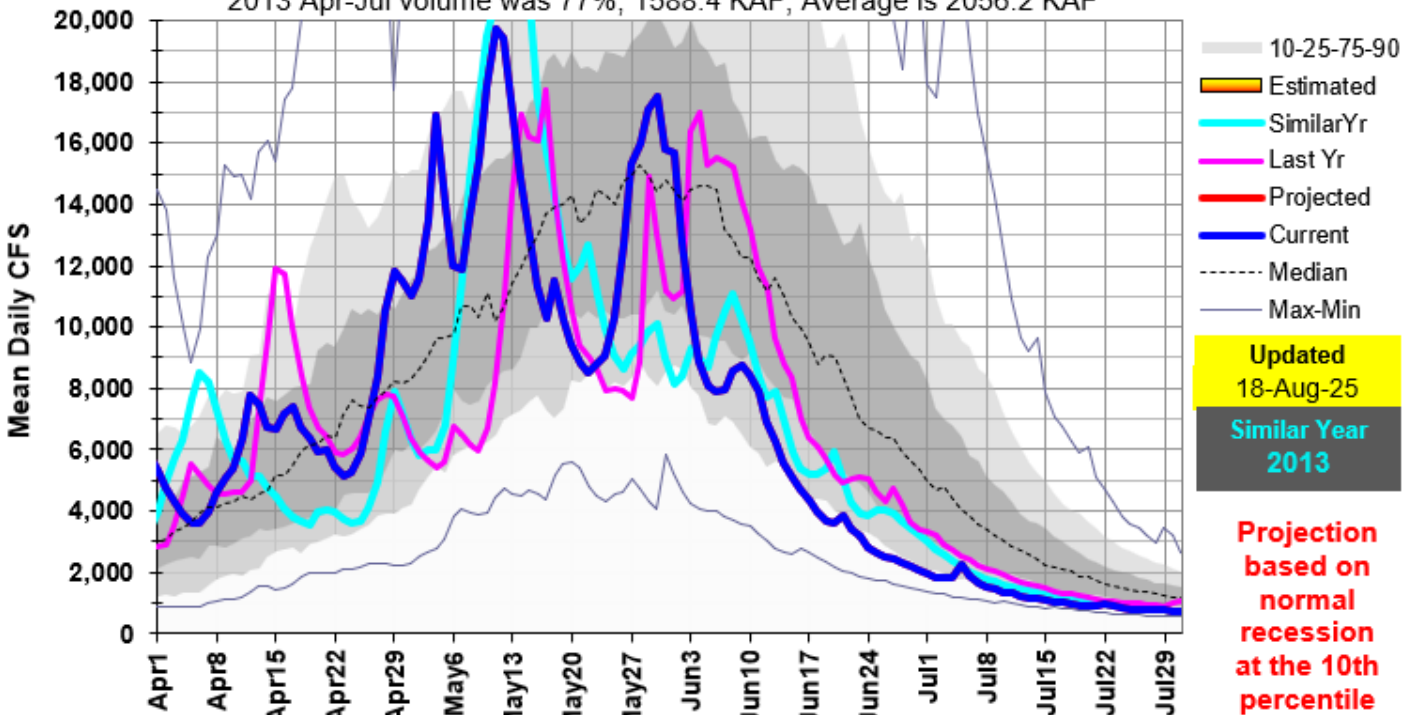
13317000: Salmon R at White Bird, ID

Mean Daily CFS

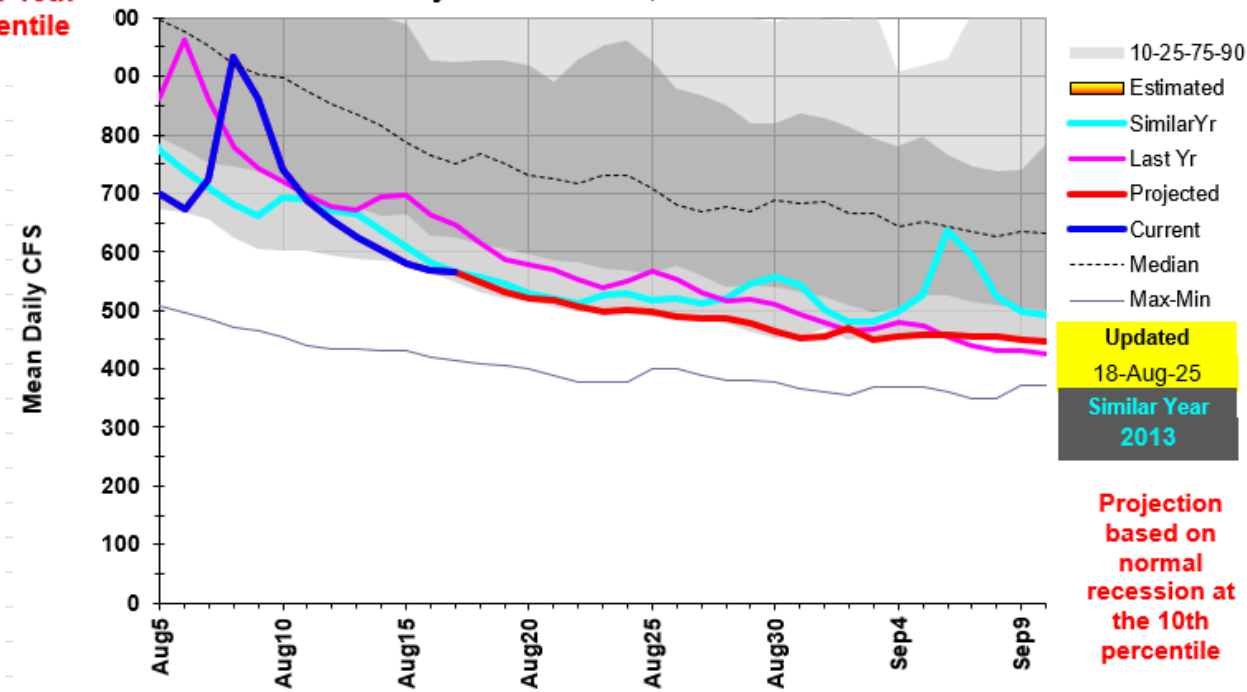


13336500: Selway R near Lowell, ID

2013 Apr-Jul volume was 77%, 1588.4 KAF, Average is 2056.2 KAF

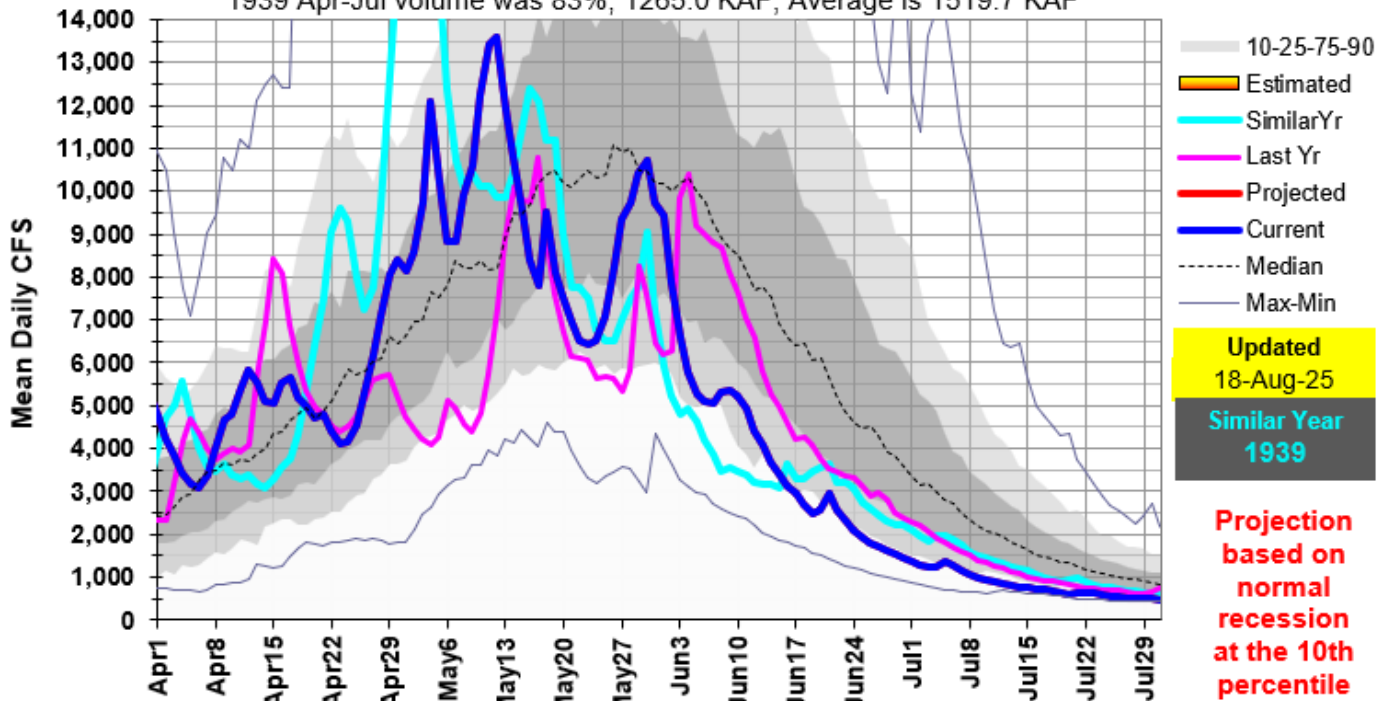


13336500: Selway R near Lowell, ID

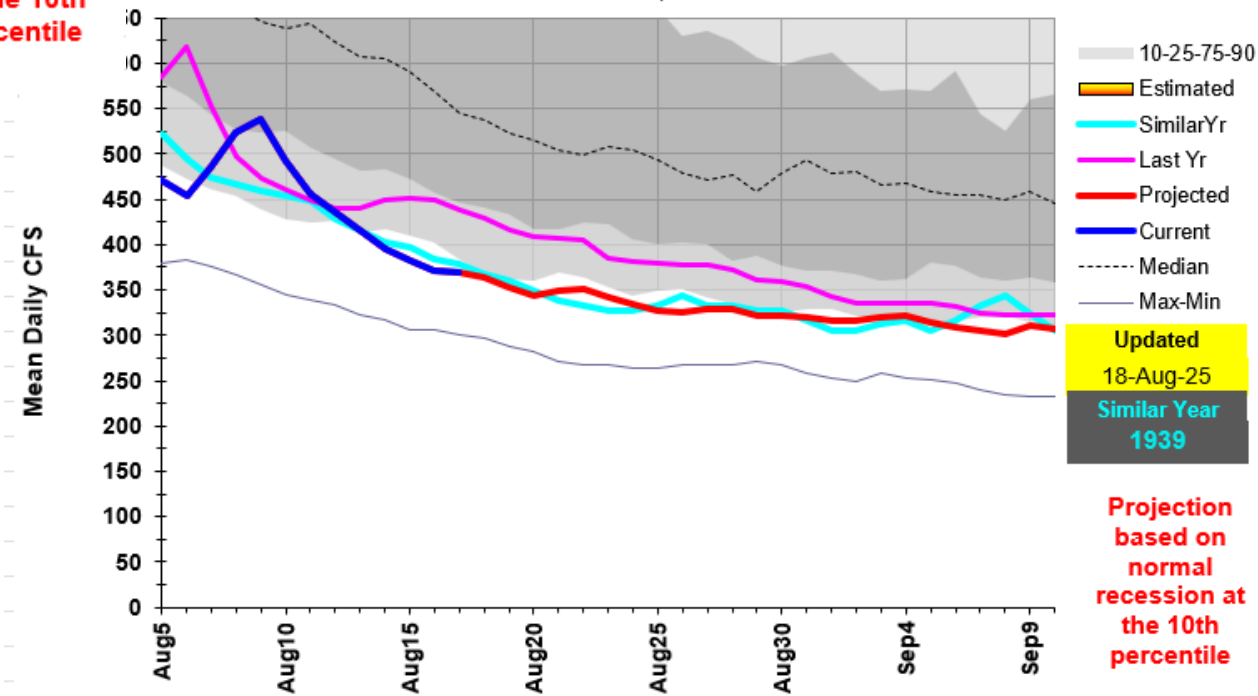


13337000: Lochsa R near Lowell, ID

1939 Apr-Jul volume was 83%, 1265.0 KAF, Average is 1519.7 KAF

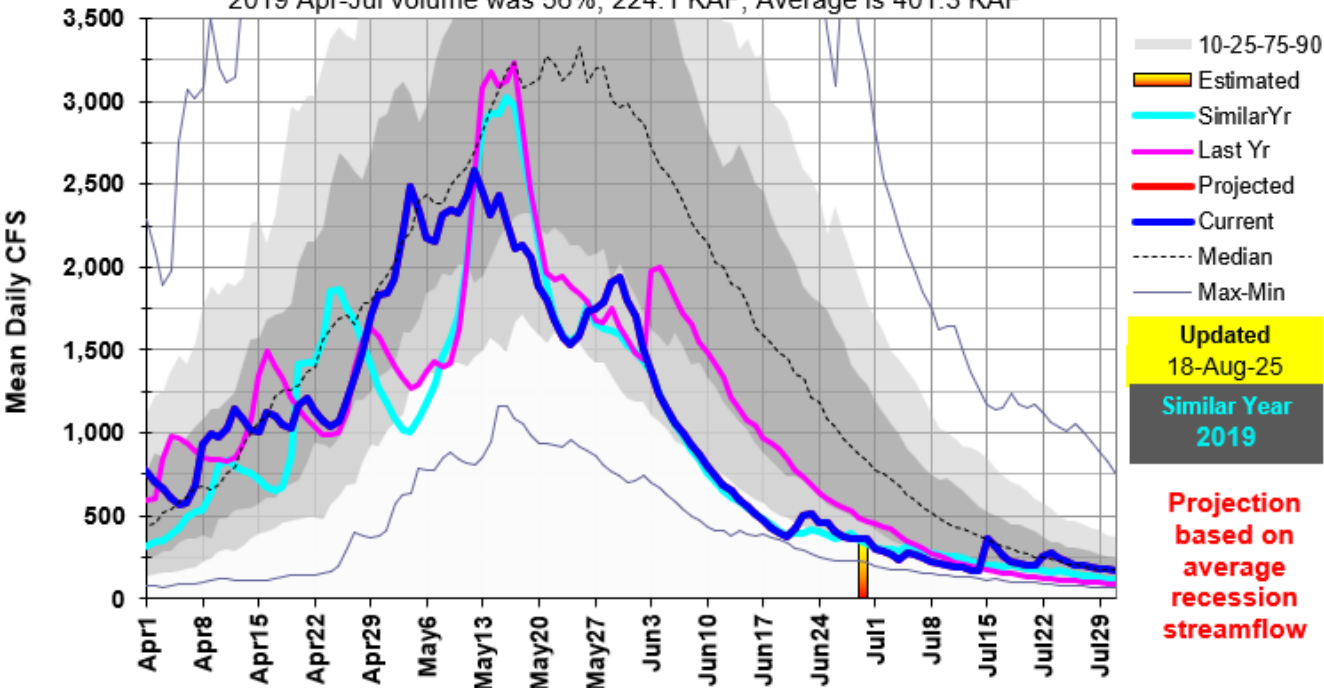


13337000: Lochsa R near Lowell, ID

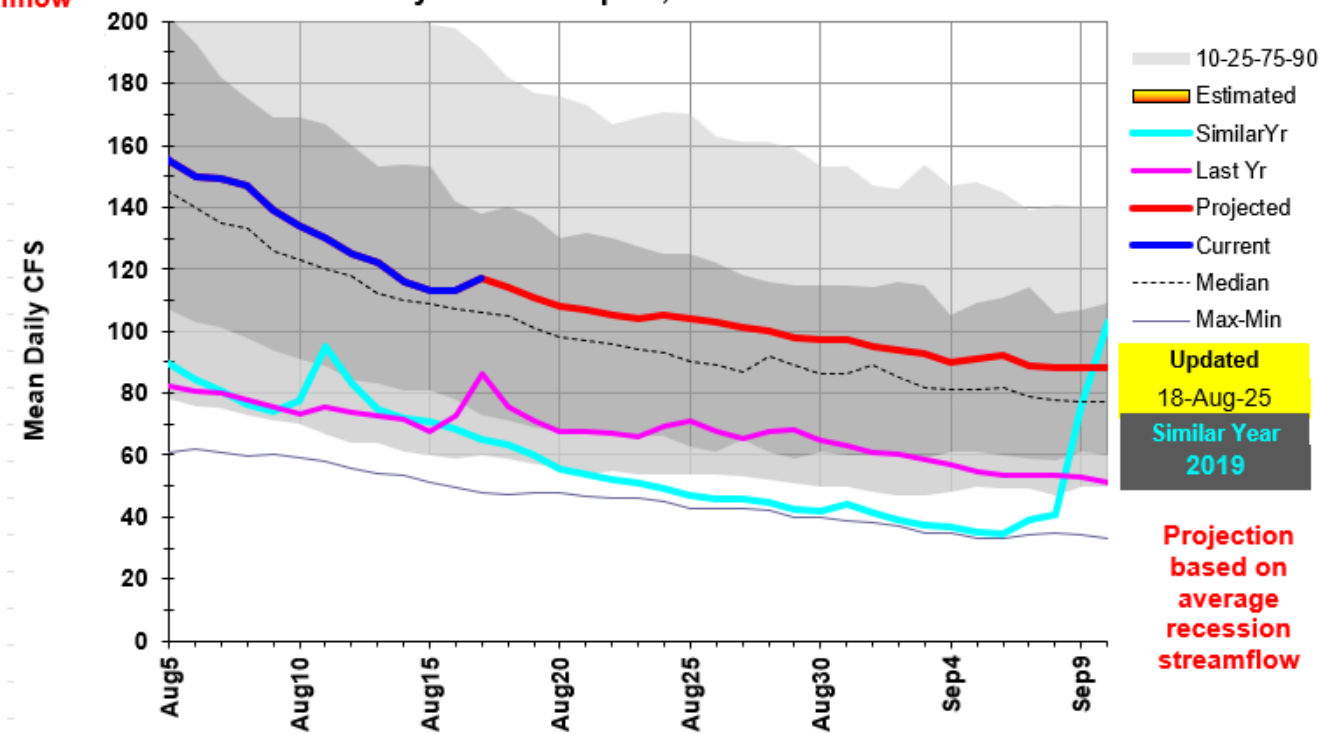


12306500: Moyie R at Eastport, ID

2019 Apr-Jul volume was 56%, 224.1 KAF, Average is 401.3 KAF

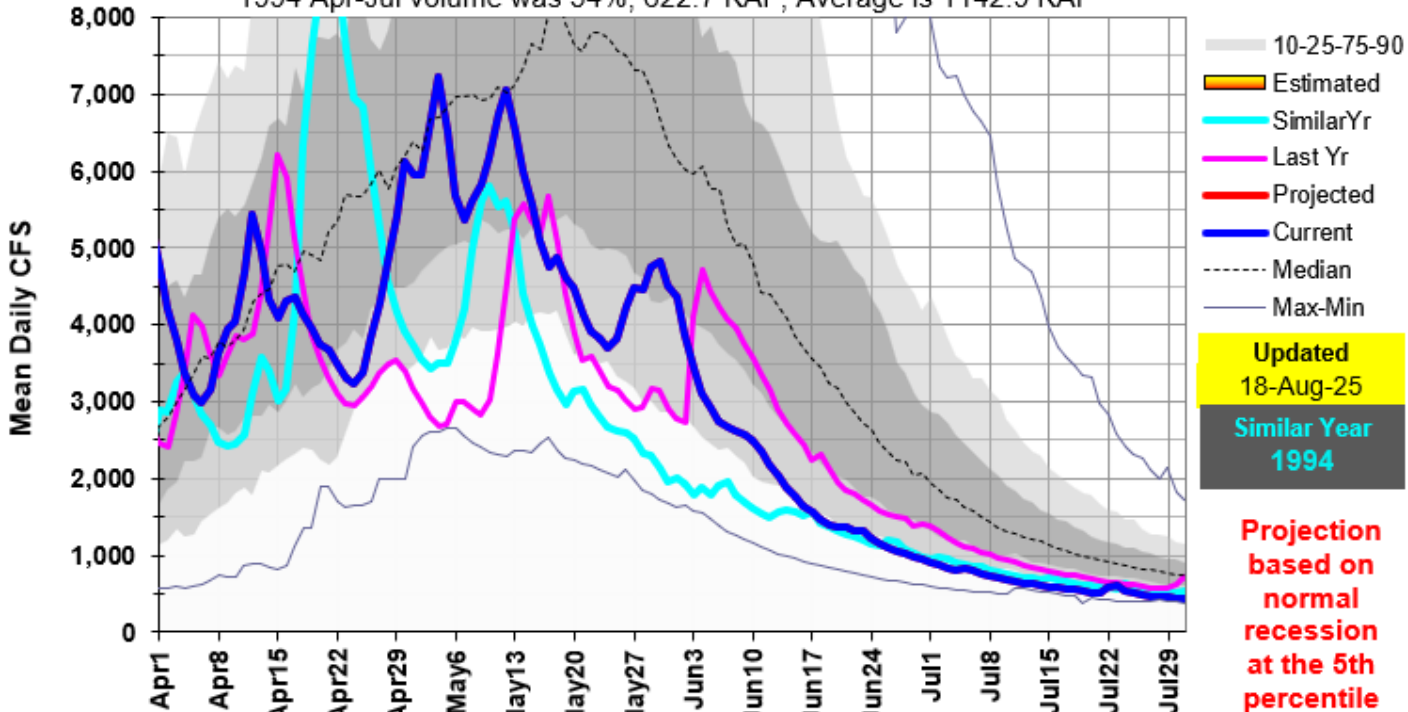


12306500: Moyie R at Eastport, ID

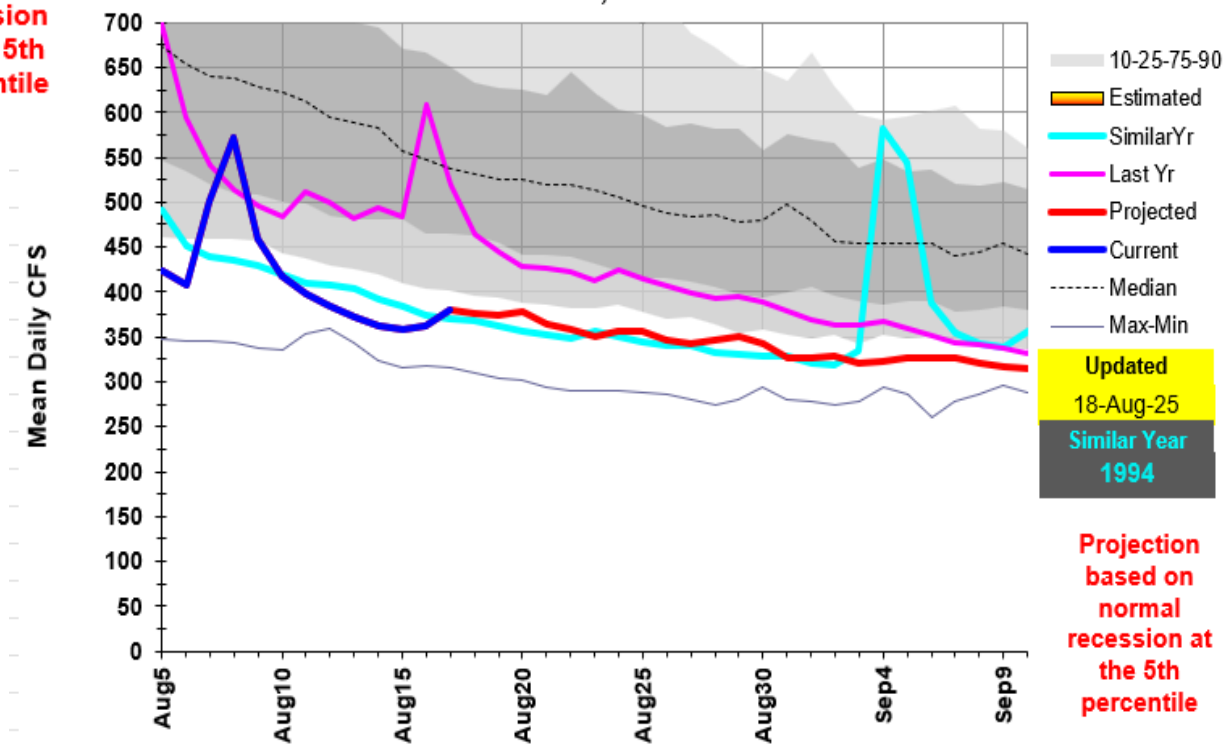


12414500: St. Joe R at Calder, ID

1994 Apr-Jul volume was 54%, 622.7 KAF, Average is 1142.9 KAF

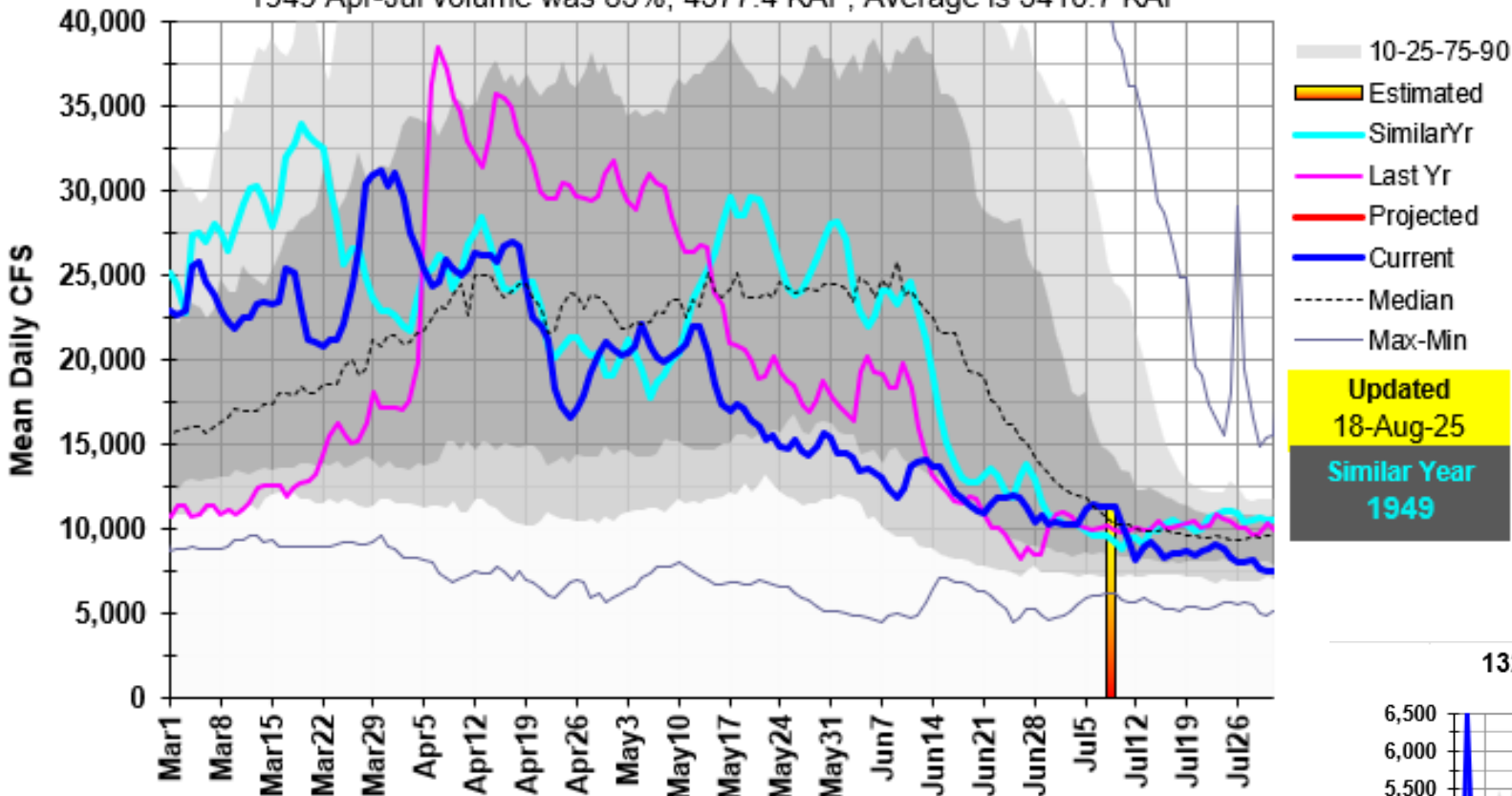


12414500: St. Joe R at Calder, ID



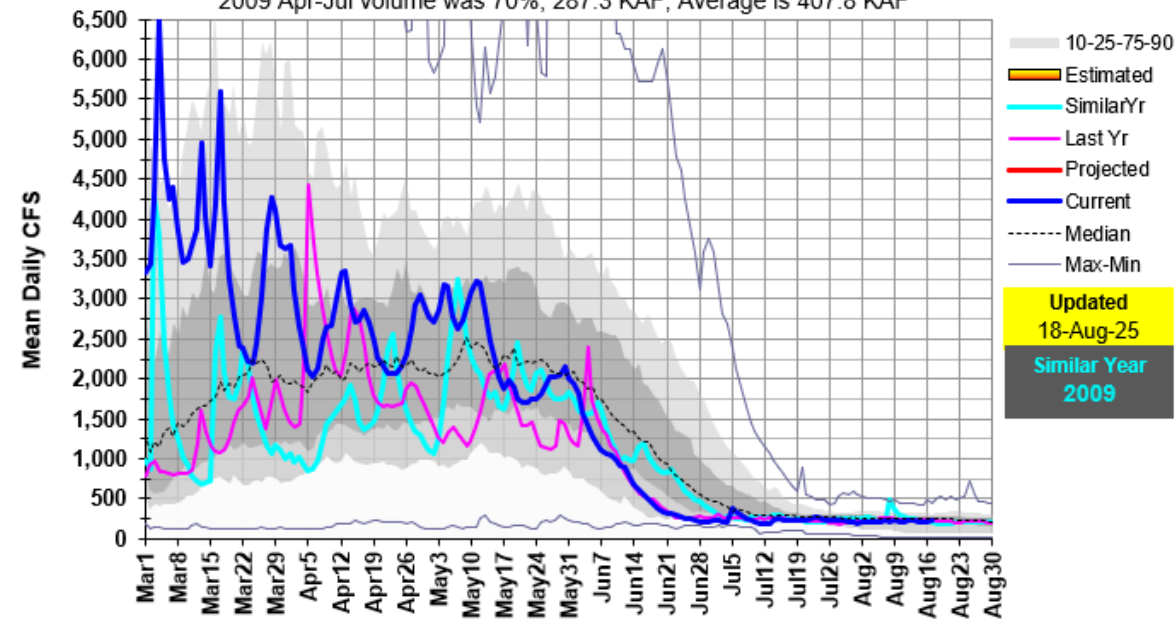
13269000: Snake R at Weiser, ID

1949 Apr-Jul volume was 85%, 4577.4 KAF, Average is 5410.7 KAF



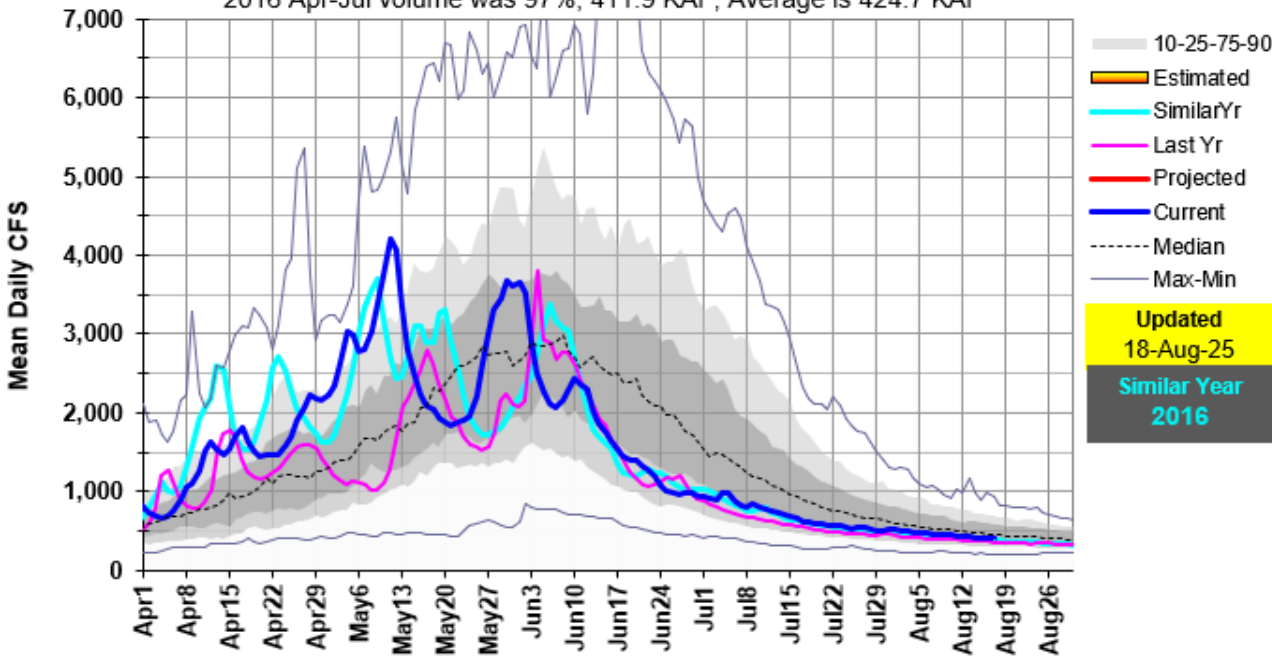
13266000: Weiser R near Weiser, ID

2009 Apr-Jul volume was 70%, 287.3 KAF, Average is 407.8 KAF

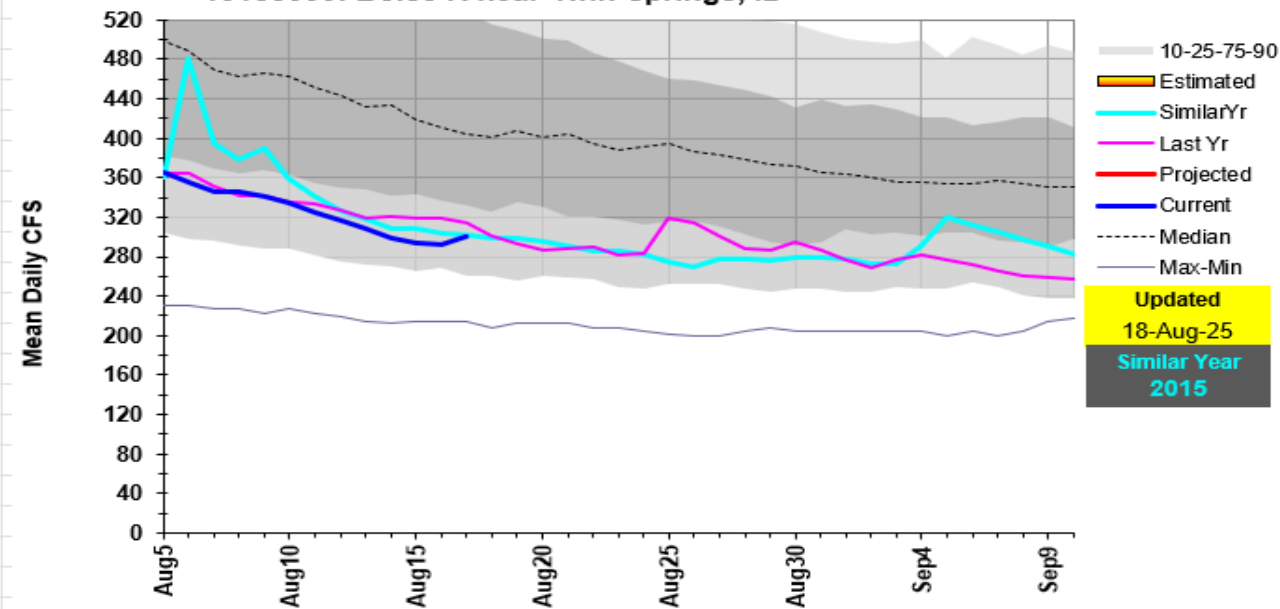


13235000: SF Payette R at Lowman, ID

2016 Apr-Jul volume was 97%, 411.9 KAF, Average is 424.7 KAF

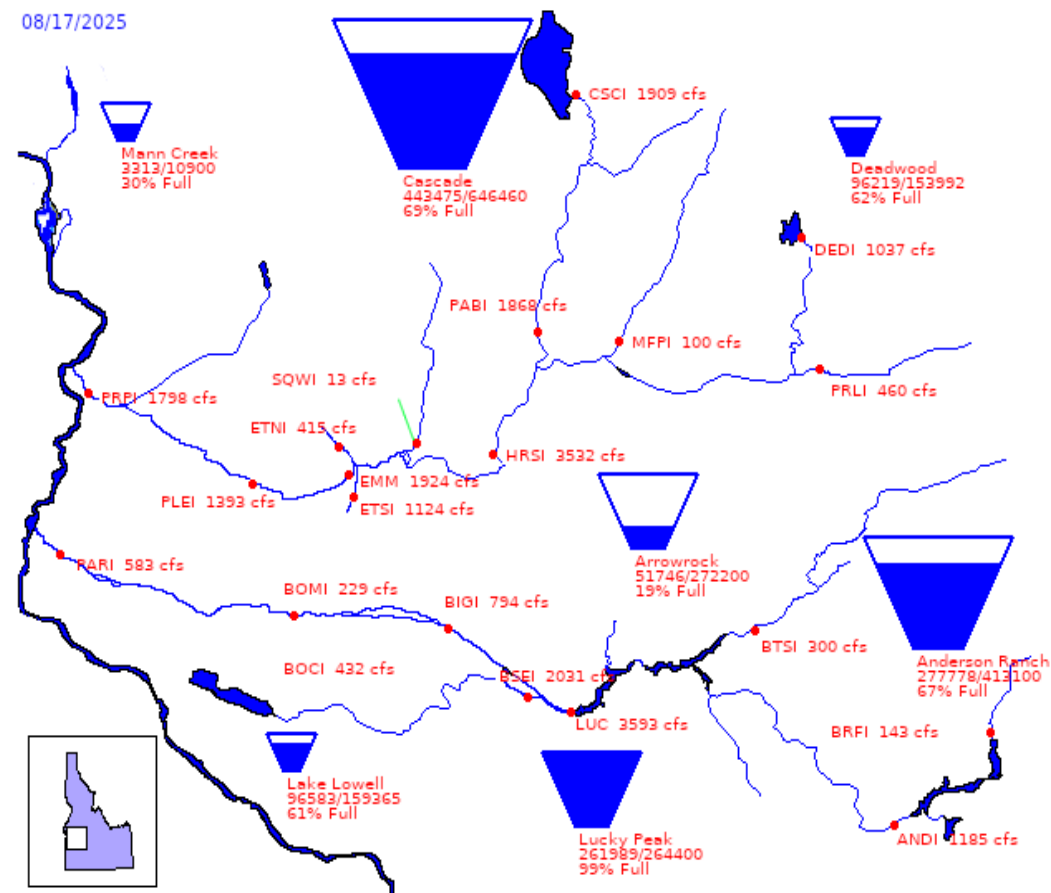


13185000: Boise R near Twin Springs, ID

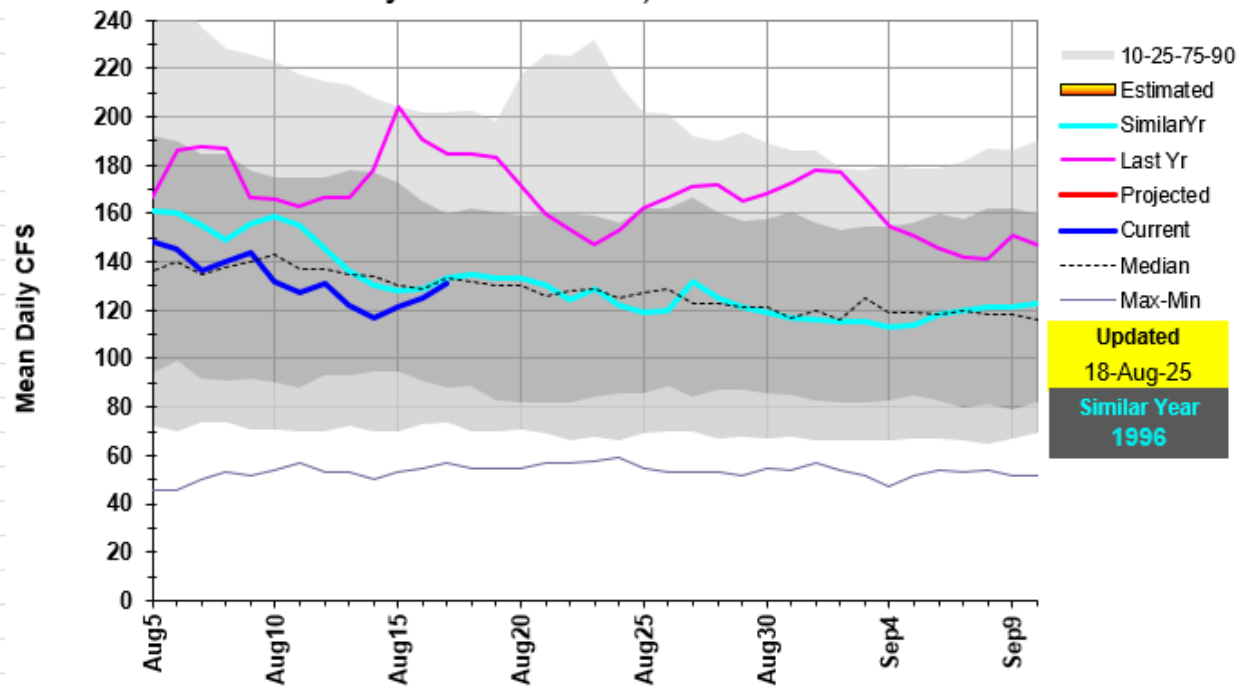


Bureau of Reclamation, Pacific Northwest Region Major Storage Reservoirs in the Boise & Payette River Basins

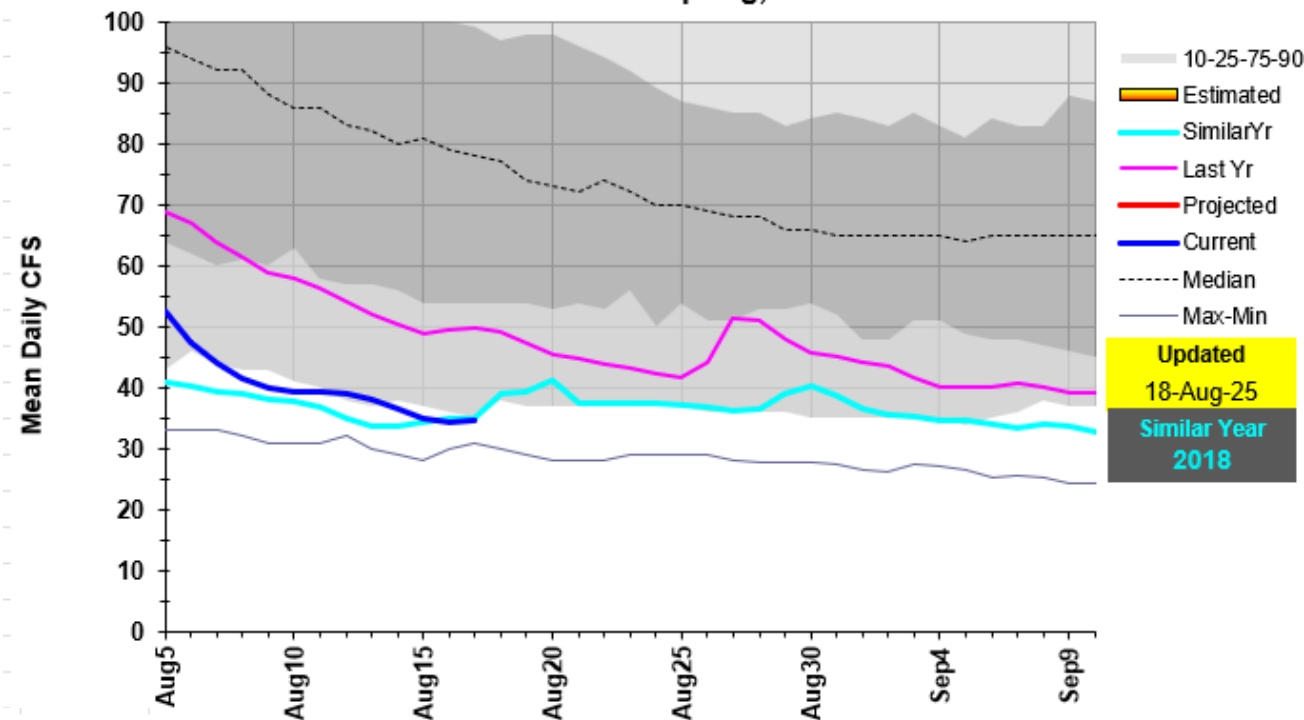
08/17/2025



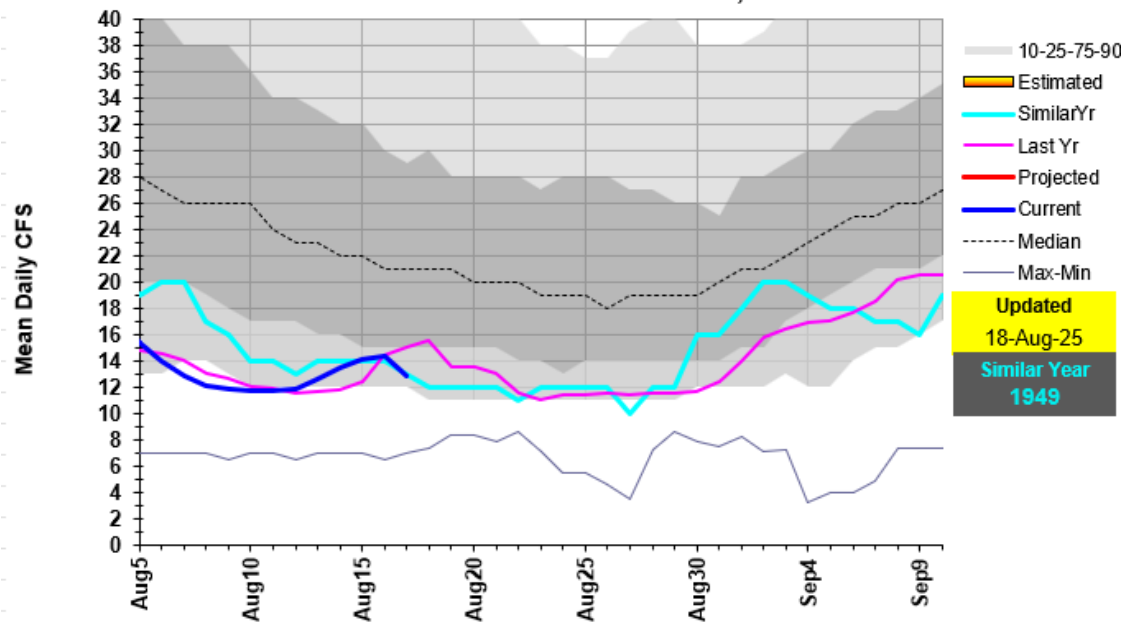
13181000: Owyhee R near Rome, OR



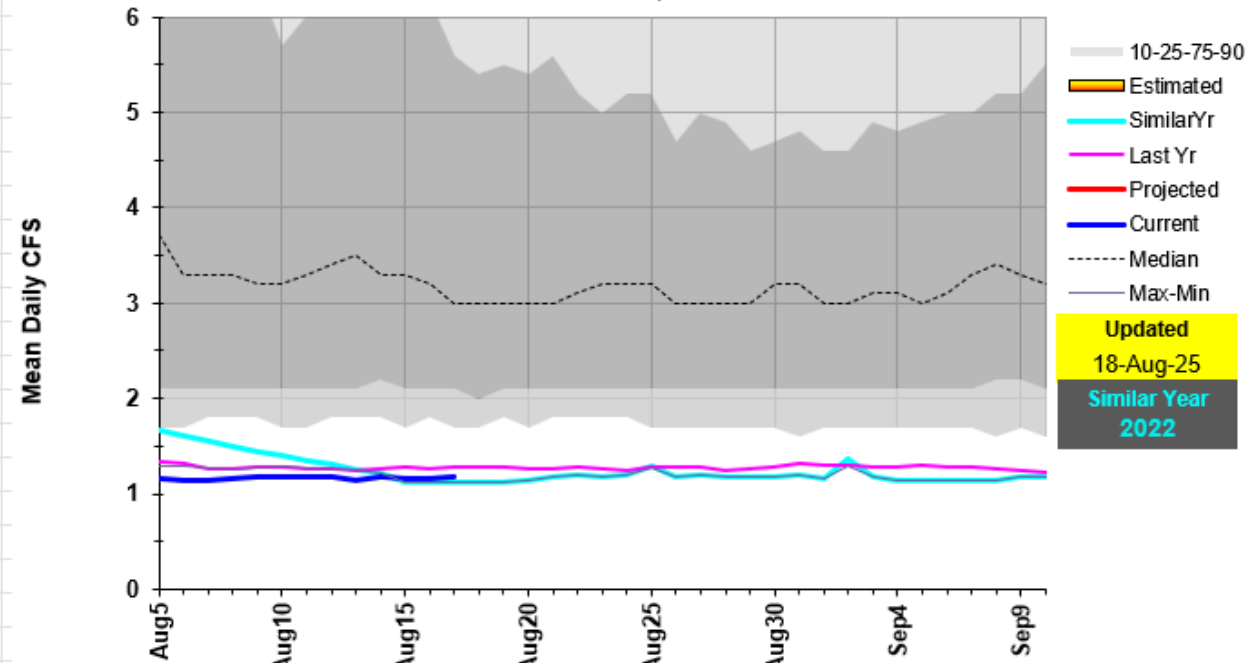
13168500: Bruneau R near Hot Spring, ID



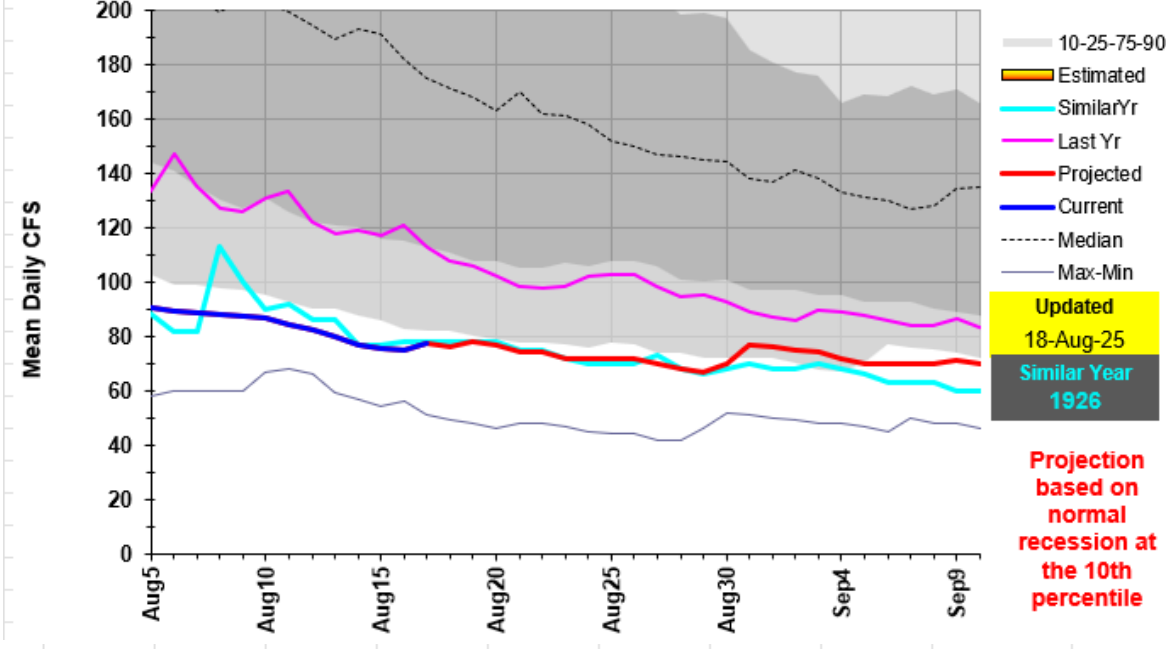
13105000: Salmon Falls Ck near San Jacinto, NV



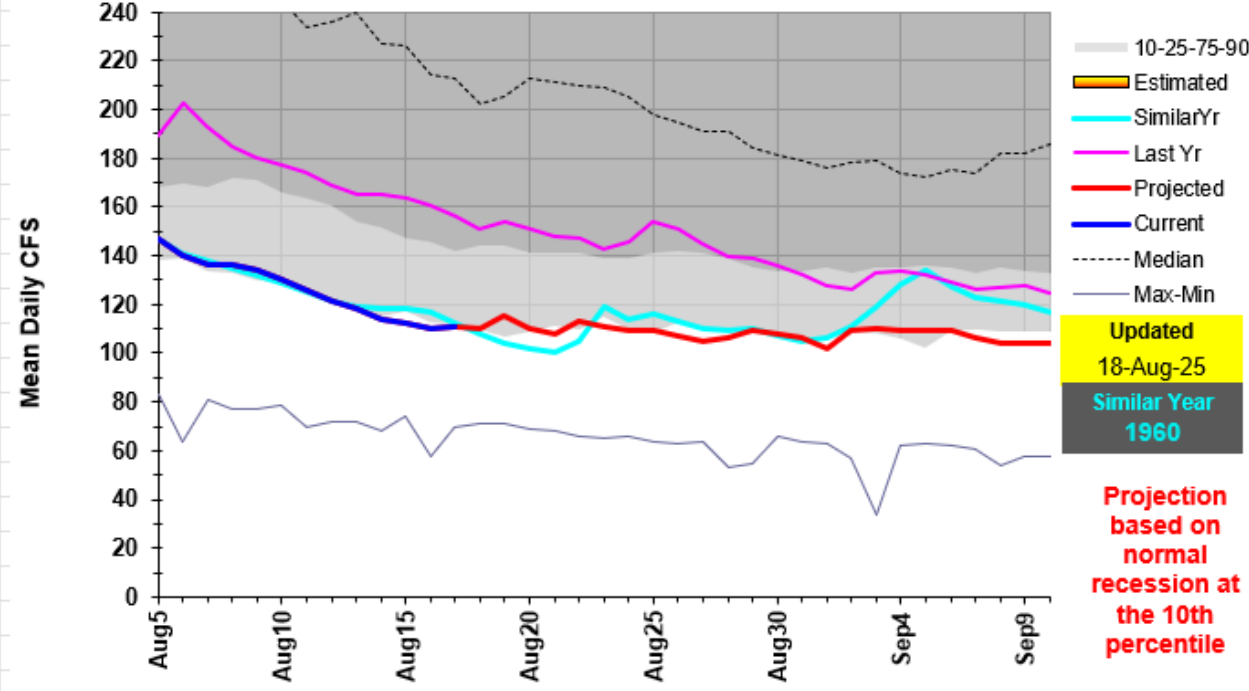
13141500: Camas Ck near Blaine, ID



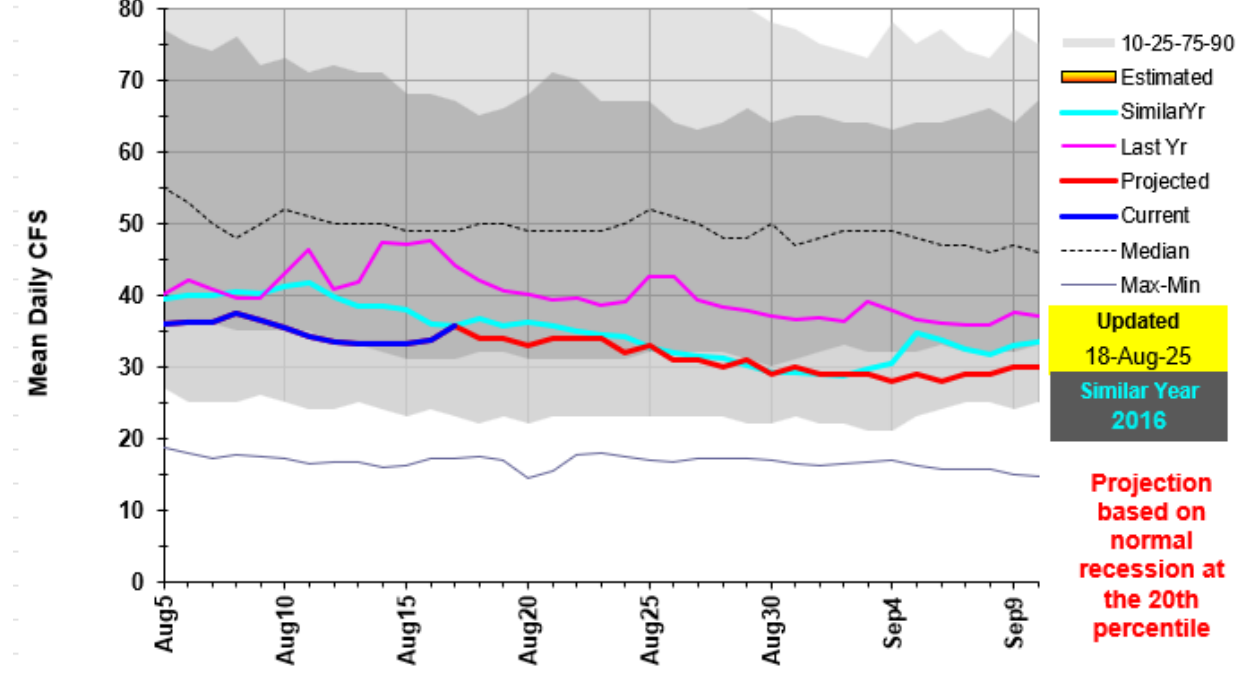
13120500: Big Lost R at Howell Ranch near Chilly, ID



13139510: Big Wood R at Hailey, ID Total Flow

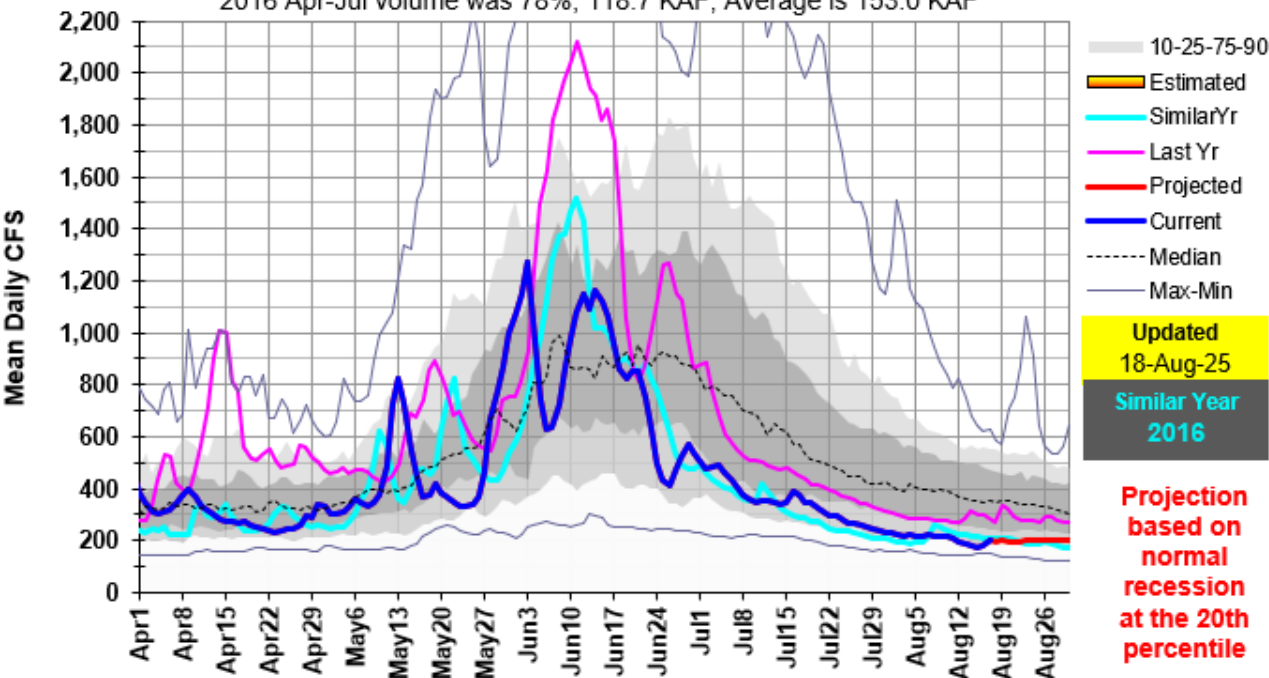


13118700: Little Lost R below Wet Ck near Howe, ID

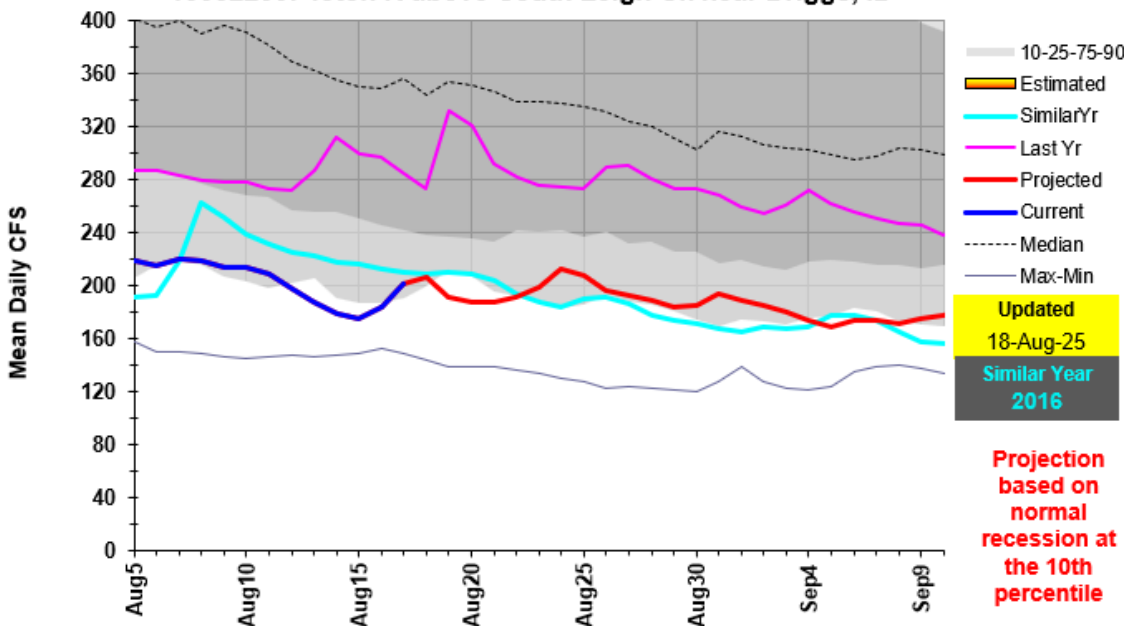


13052200: Teton R above South Leigh Ck near Driggs, ID

2016 Apr-Jul volume was 78%, 118.7 KAF, Average is 153.0 KAF



13052200: Teton R above South Leigh Ck near Driggs, ID



13010065: Snake R above Jackson Lake at Flagg Ranch, WY

