

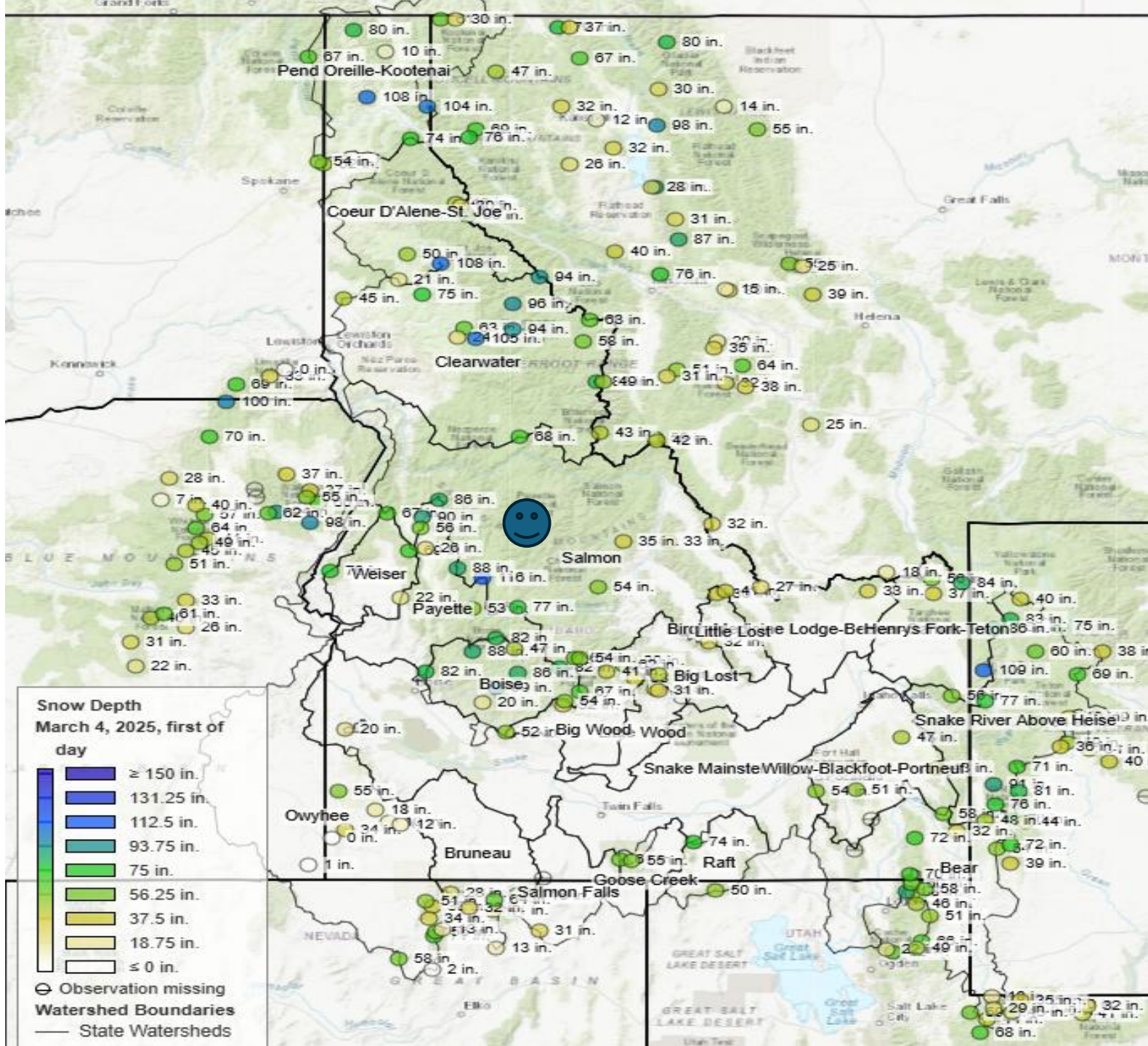
It's early March and where's the Snow ?

Deadwood Summit in central Idaho still has the deepest snowpack in the region with 116" followed by Grand Targhee, 109", and Schweitzer and Lost Lake with 108".

Following is look at what February bought to Bogus compared to historic snow course measurements at the Showcase Marker.

Daily snow depth graphs follow with analog years for this winter – 2017, 2006, 1999, 1993. See previous post for analog year summary.

Lucky for us, looks like winter weather returns in mid-March.



March 1 Bogus Basin Snow Depth on Ground at Showcase Marker, 1944 to 2025

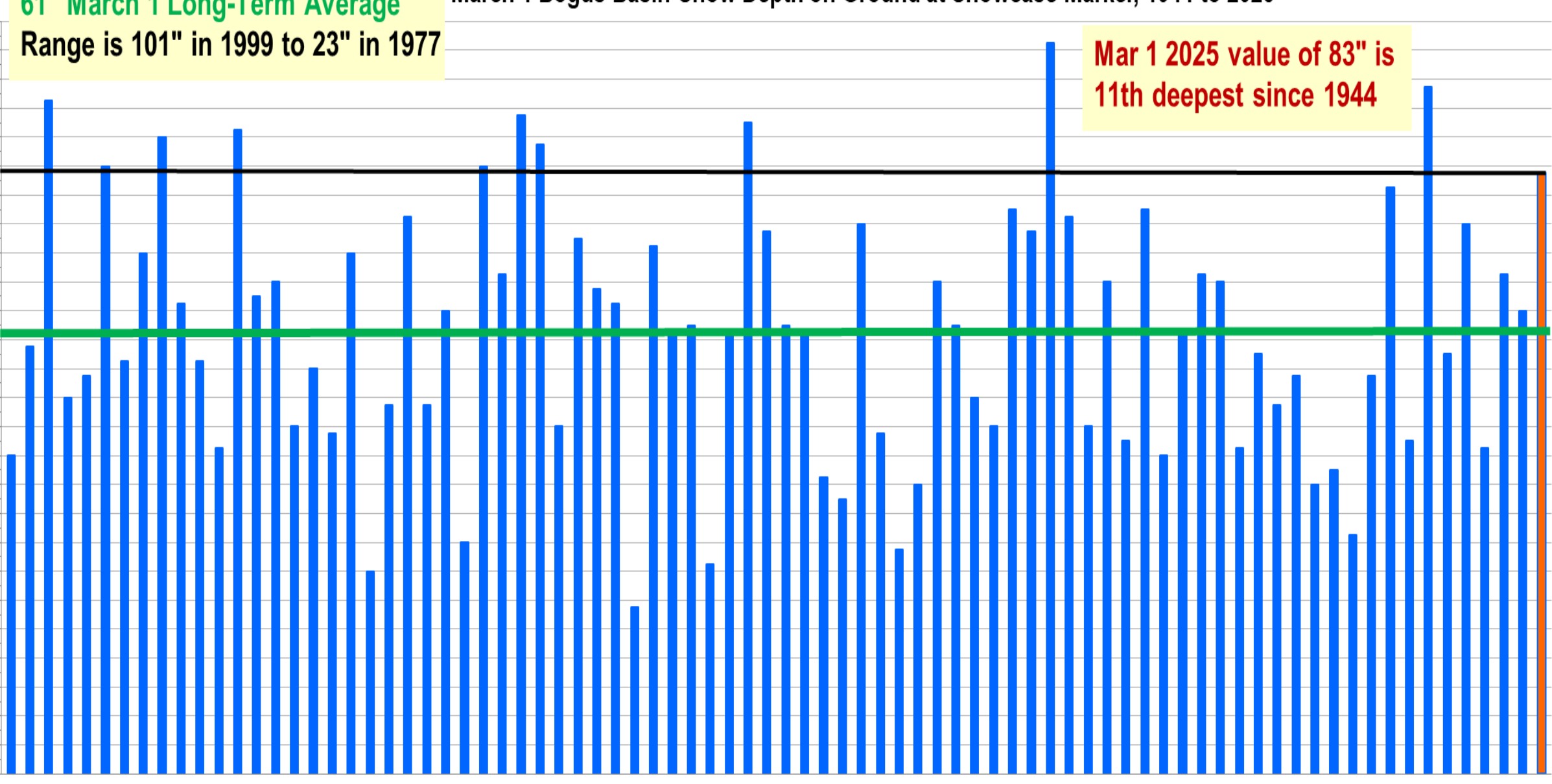
61" March 1 Long-Term Average
Range is 101" in 1999 to 23" in 1977

Mar 1 2025 value of 83" is
11th deepest since 1944

Snow Depth on the Ground (inches)

104
100
96
92
88
84
80
76
72
68
64
60
56
52
48
44
40
36
32
28
24
20
16
12
8
4
0

1944
1945
1946
1947
1948
1949
1950
1951
1952
1953
1954
1955
1956
1957
1958
1959
1960
1961
1962
1963
1964
1965
1966
1967
1968
1969
1970
1971
1972
1973
1974
1975
1976
1977
1978
1979
1980
1981
1982
1983
1984
1985
1986
1987
1988
1989
1990
1991
1992
1993
1994
1995
1996
1997
1998
1999
2000
2001
2002
2003
2004
2005
2006
2007
2008
2009
2010
2011
2012
2013
2014
2015
2016
2017
2018
2019
2020
2021
2022
2023
2024
2025



	A	B	C	D	E	F
1	Bogus Basin Snow Course site Number 16F02					
2	Elevation 6340 ft					
3	Unit = inches		Snow Water Equivalent SWE			
4						
5	Water	Jan		Feb		Mar
6	Year	1st	mid	1st	mid	1st
7	1972	19.0	23.0	31.3	33.5	34.2
8	1999	13.2	13.7	22.3	30.7	33.7
9	1946	16.0	21.0	25.2		32.0
10	1983	15.8	19.0	22.0	28.5	31.0
11	1952	17.1	21.7	25.7	28.0	30.0
12	1949	15.0	16.7	17.3		29.5
13	1971	15.7	24.0	26.3		29.5
14	1969	13.5	15.2	27.5	28.0	29.5
15	1997	22.2	20.7	27.1	29.0	29.1
16	2019	7.5		11.5		28.3
17	1974	18.8	17.5	21.7		27.5
18	1965	14.2		28.2	28.3	27.5
19	2017	7.2		18.3		26.8
20	1984	18.5	18.0	20.3	23.0	26.3
21	1970	8.5	13.0	23.0	25.8	26.3
22	2004	12.0		23.0		26.3
23	1998	7.2	14.7	18.7	24.7	25.9
24	2025	13.0		17.0		25.7
25	1978	7.5		16.3	22.8	25.3
26	1989	13.2	19.0	20.2	20.8	25.3
27	1951	8.0	12.3	18.3	21.5	25.0
28	2000	6.8	14.7	18.7	19.0	24.7
29	2002	18.2	17.0	22.5		24.7

Bogus February Snow Water Equivalent (SWE) Check

These years all had
more SWE on the
ground on March 1
than this year.

When you do the SWE math:
Mar 1 – Feb 1 =
 $25.7 - 17.0 = 8.7''$ SWE increase
during the month of Feb

This is the 8th greatest Feb SWE
increase since measurements starting
in 1944. Who remembers 2019 with
16.8'' during the month of February.

Feb SWE increase
sorted high to
low. 2025 is the
8th highest.

	A	AA
1	Bogus B	
2	Elevation	
3	Unit = in	
4		
5	Water	
6	Year	
7	2019	16.8
8	1949	12.2
9	1986	11.8
10	1999	11.4
11	1945	9.3
12	1978	9.0
13	1983	9.0
14	2025	8.7
15	2017	8.5
16	2024	8.0
17	1994	7.6
18	1960	7.5
19	1979	7.5
20	1998	7.2
21	2014	7.2
22	1946	6.8

	A	B	C	D	E	F
1	Bogus Basin Snow Course site Number 16F02					
2	Elevation 6340 ft					
3	Unit = inches		Snow Depth			
4						
5	Water	Jan		Feb		Mar
6	Year	1st	mid	1st	mid	1st
7	1999	45	46	74	85	101
8	2019	26		36		95
9	1946	57	65	78		93
10	1971	54	71	70		91
11	1983	57	55	66	83	90
12	1956	38	49	66	70	89
13	1952	63	74	81	82	88
14	1972	65	69	93	91	87
15	1949	51	51	51		84
16	1969	41	55	83	83	84
17	2025	58		50		83
18	2017	33		62		81
19	1997	64	63	85	76	78
20	2004	50		70		78
21	1965	55		85	80	77
22	2000	23	52	53	60	77
23	1989	50	71	63	61	76
24	2021	31		56		76

Bogus February Snow Depth Check

These years all had a greater snow depth on March 1 than this year.

When you do the math:
 Mar 1 – Feb 1 =
 $83 - 50 = 33''$ of snow depth increase during the month of Feb.

This is tied for 2nd with the greatest snow depth increase during February since measurements starting in 1944. 2019 stands out with a 59" increase, from 36" to 95" during the month of Feb.

Feb change in Snow Depth sorted high to low. 2025 is tied for 2nd.

	A	Y
1	Bogus Basin Snow Course site Number 16F02	
2	Elevation 6340 ft	
3	Unit = inches	
4		
5	Water	
6	Year	
7	2019	59.0
8	1949	33.0
9	2025	33.0
10	2007	31.0
11	1999	27.0
12	1945	26.0
13	1994	25.0
14	1983	24.0
15	2000	24.0
16	1986	24.0
17	1956	23.0
18	1971	21.0
19	2024	21.0
20	1979	21.0
21	2021	20.0
22	1944	20.0
23	2017	19.0

Reset Range

Link to data: CSV / JSON

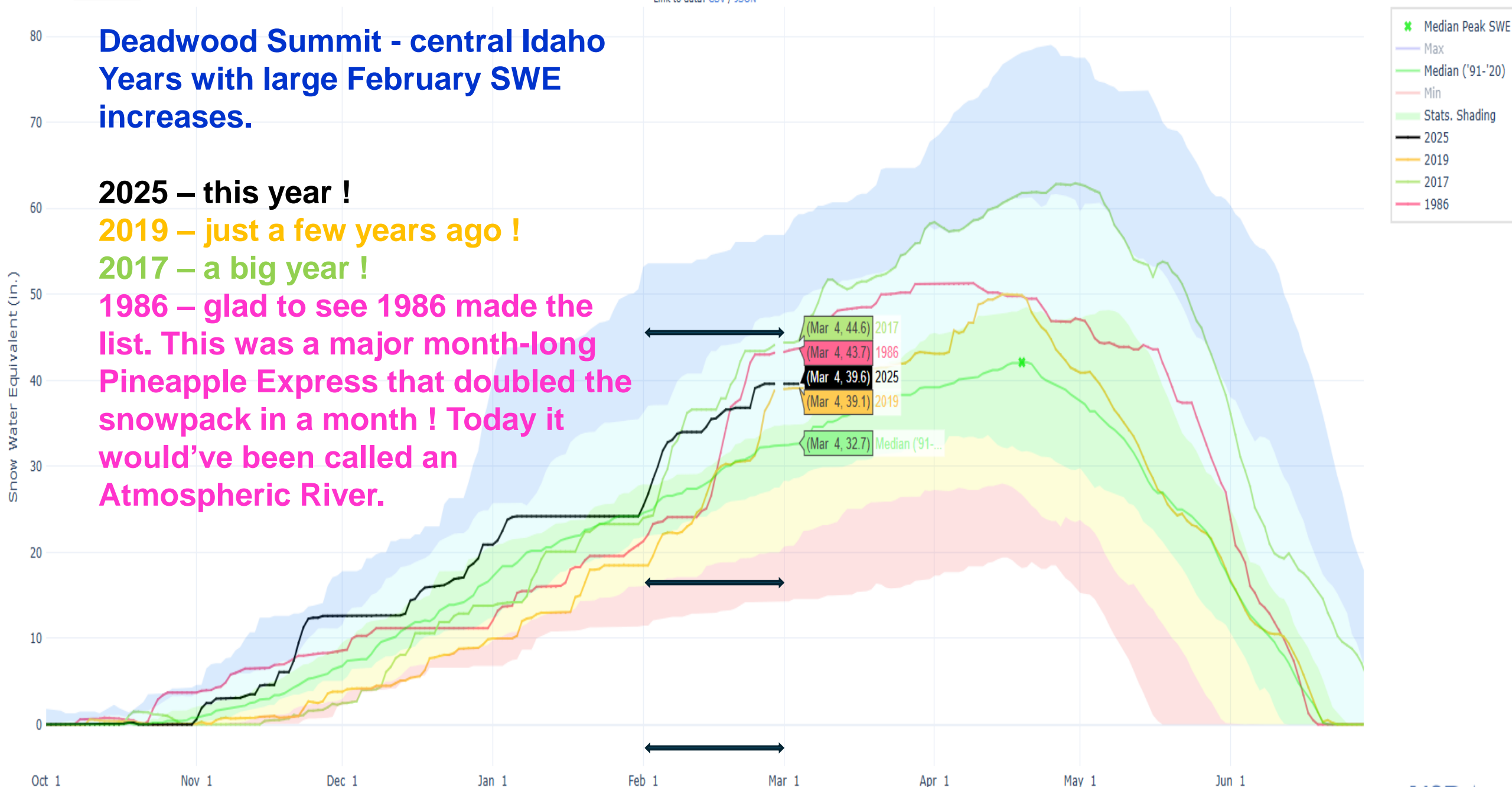
Deadwood Summit - central Idaho Years with large February SWE increases.

2025 – this year !

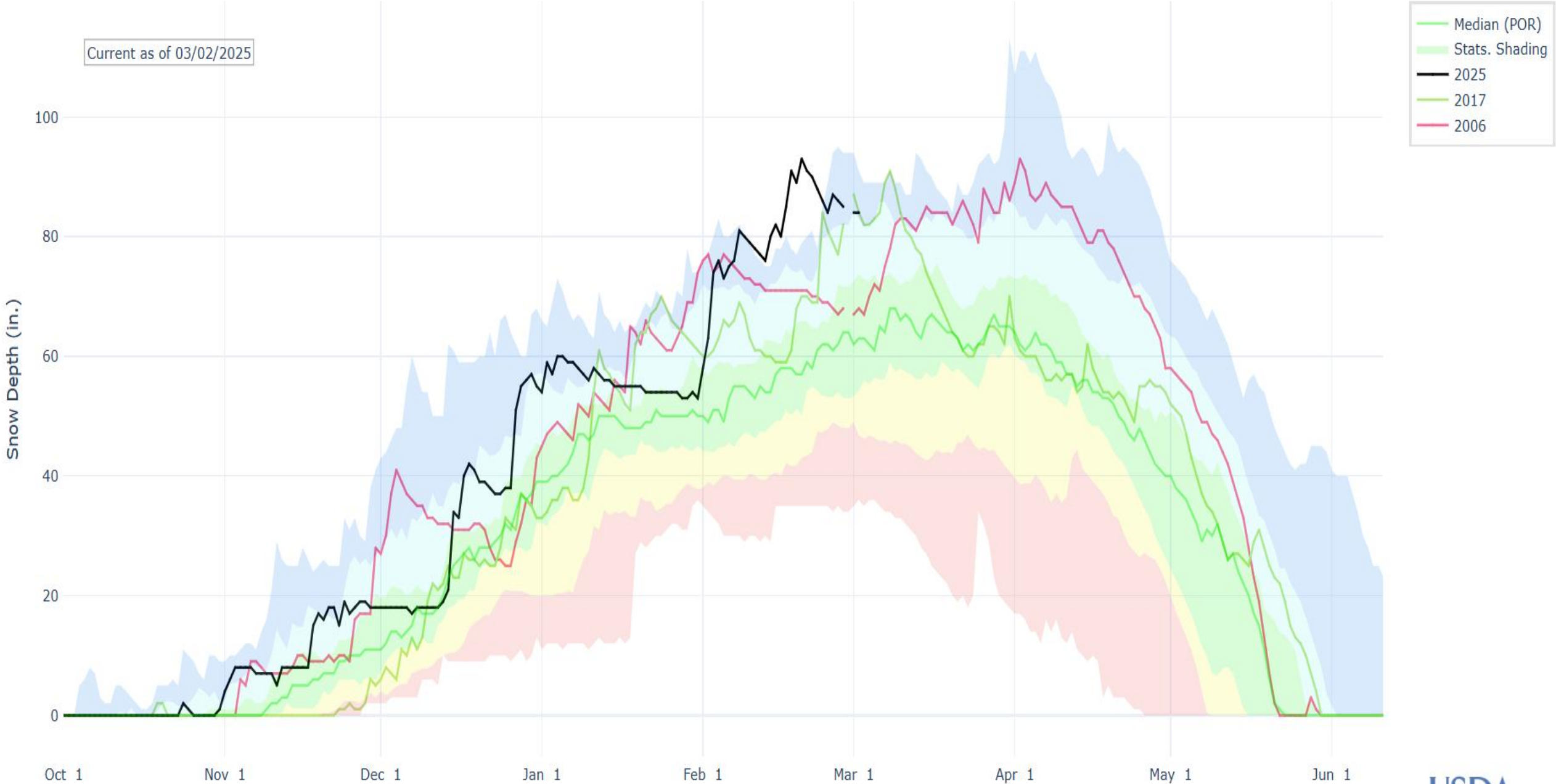
2019 – just a few years ago !

2017 – a big year !

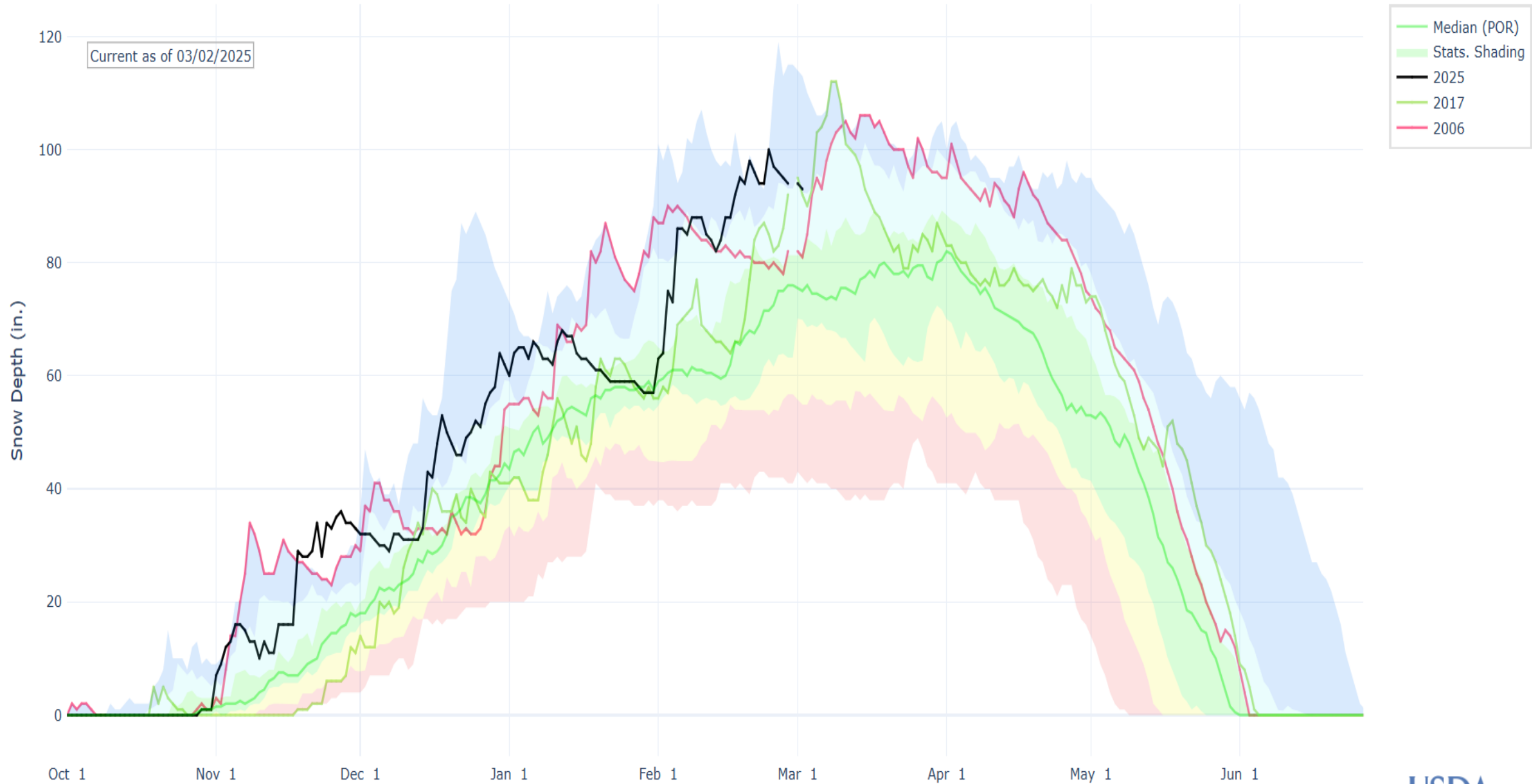
1986 – glad to see 1986 made the list. This was a major month-long Pineapple Express that doubled the snowpack in a month ! Today it would've been called an Atmospheric River.



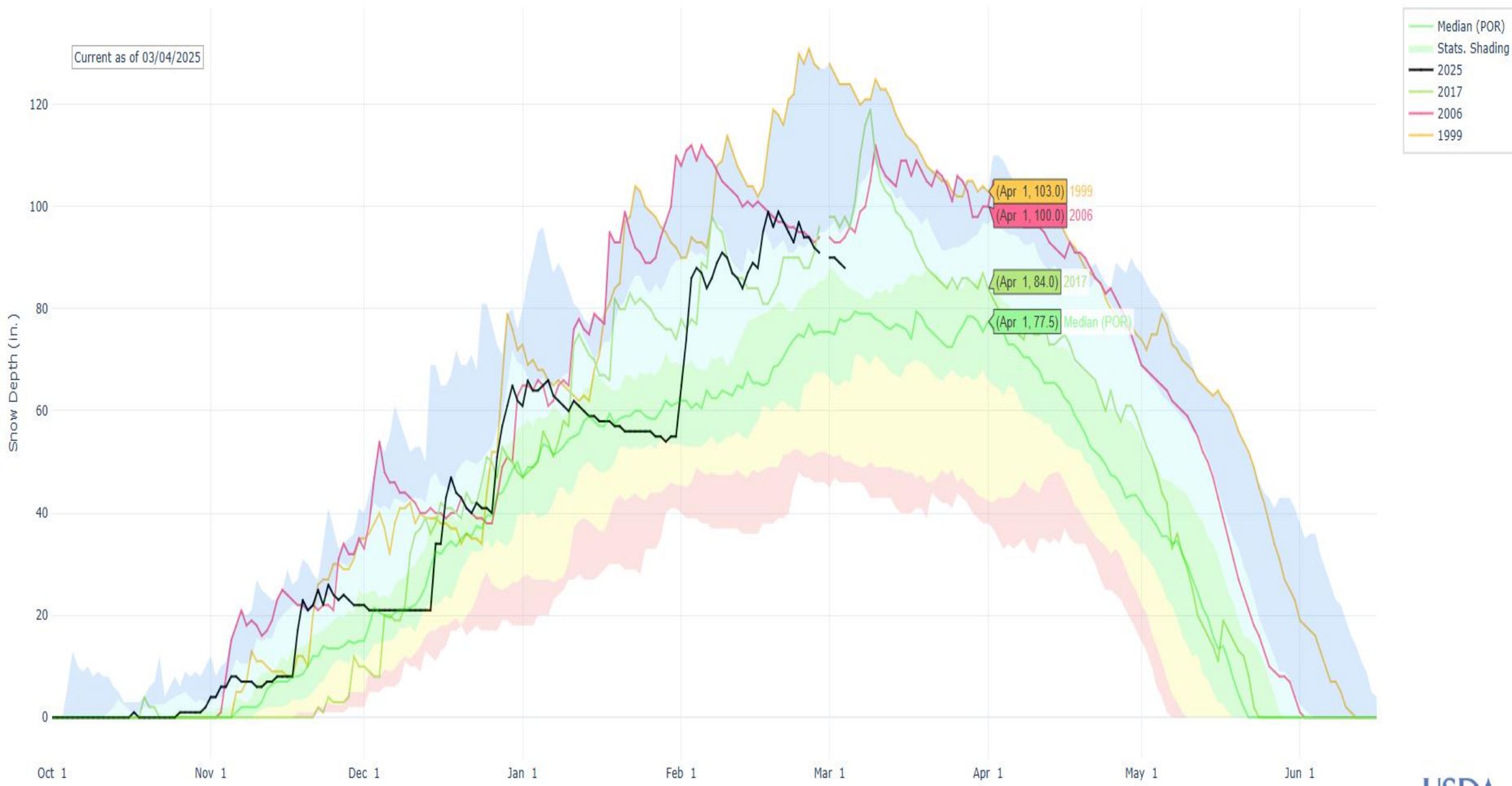
BOGUS BASIN, ID (978) SNOW DEPTH



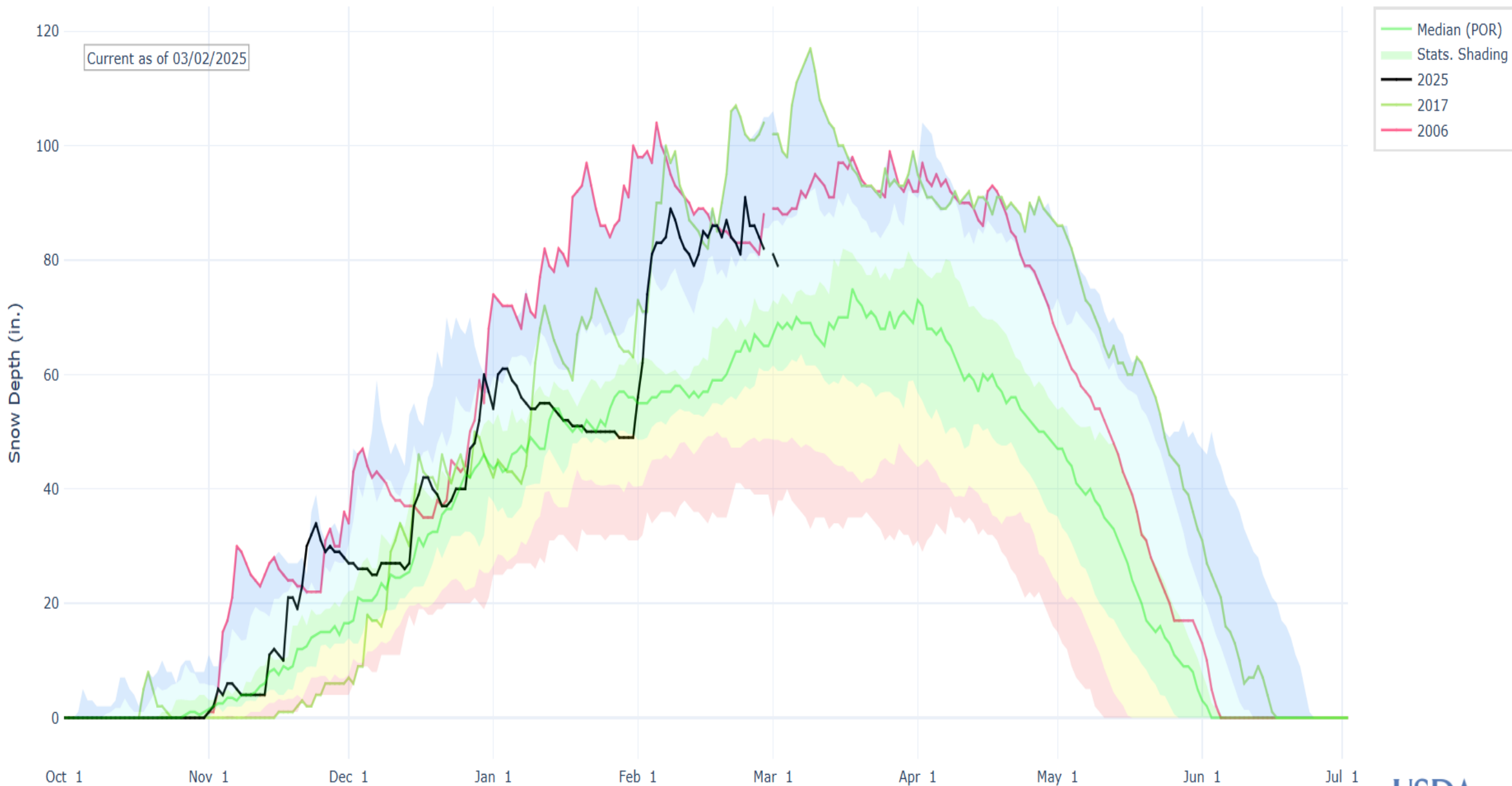
BRUNDAGE RESERVOIR, ID (370) SNOW DEPTH



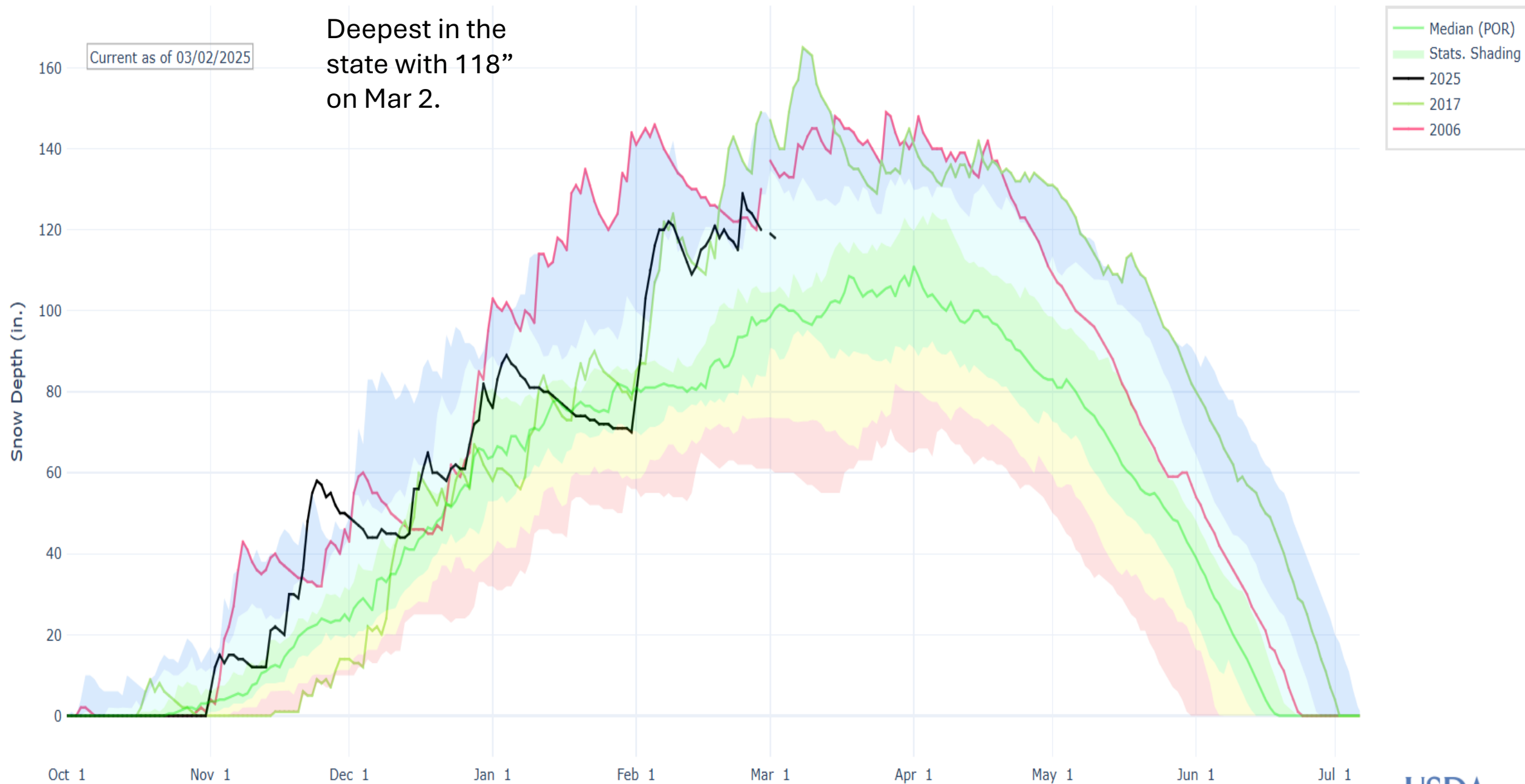
MORES CREEK SUMMIT, ID (637) SNOW DEPTH



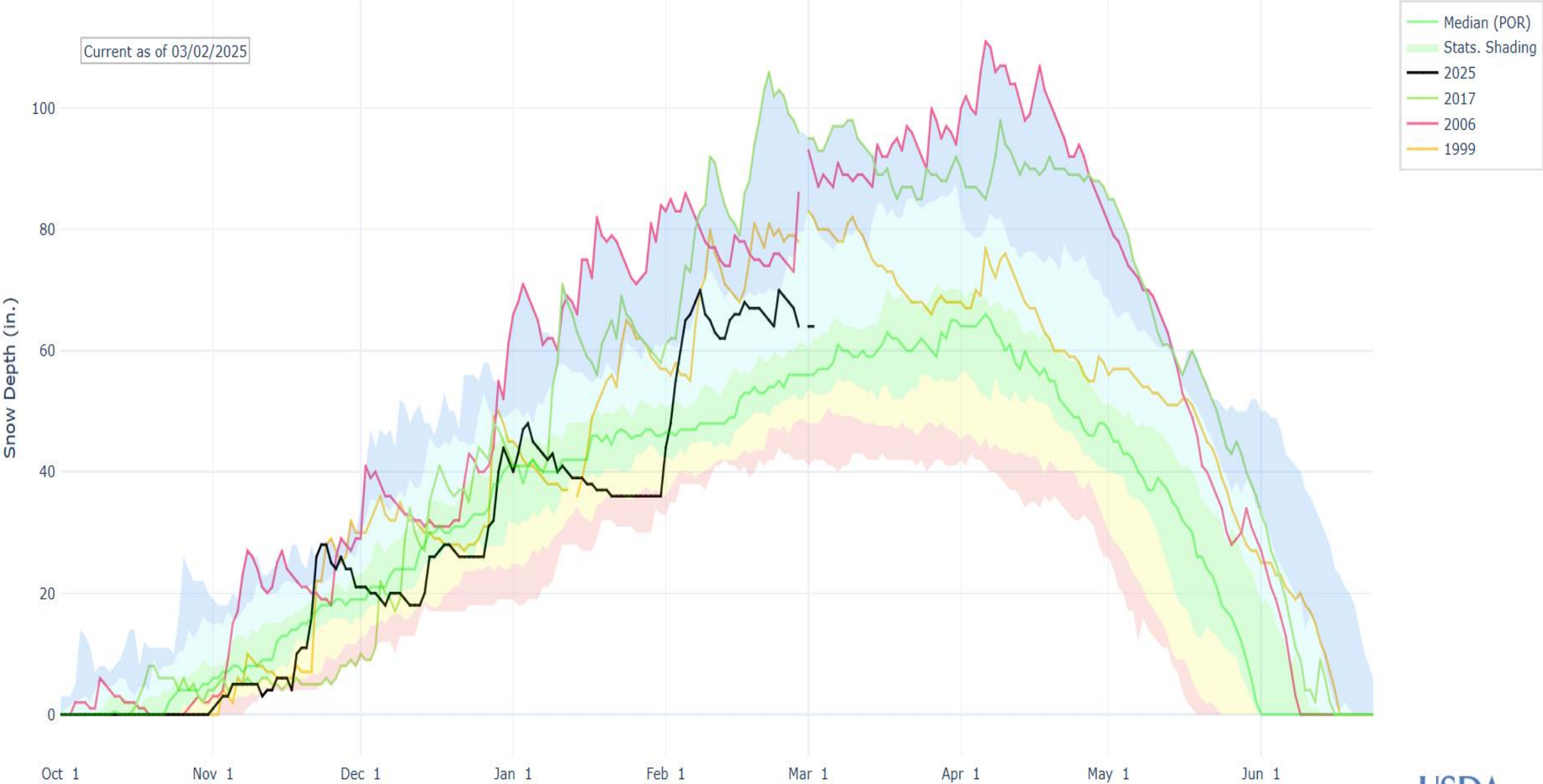
BANNER SUMMIT, ID (312) SNOW DEPTH



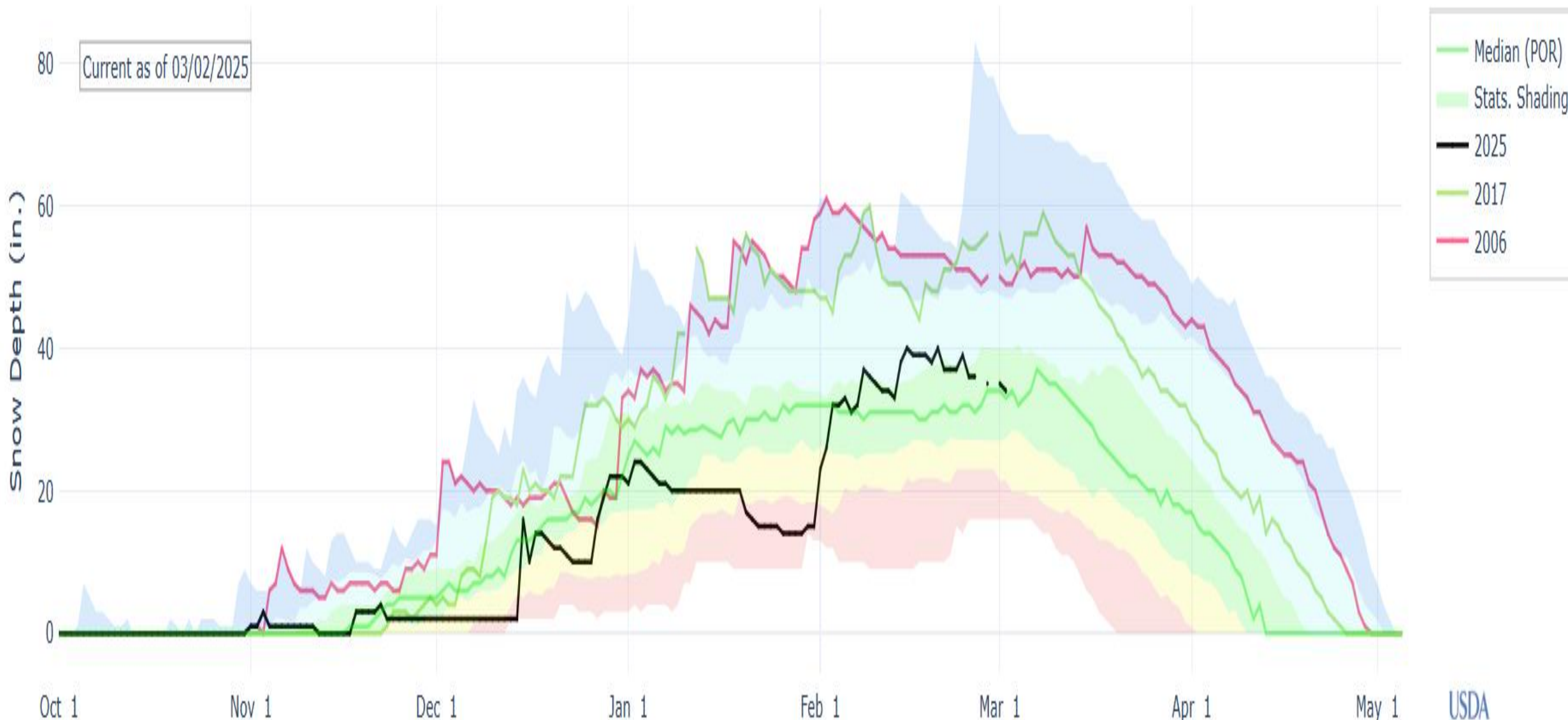
DEADWOOD SUMMIT, ID (439) SNOW DEPTH



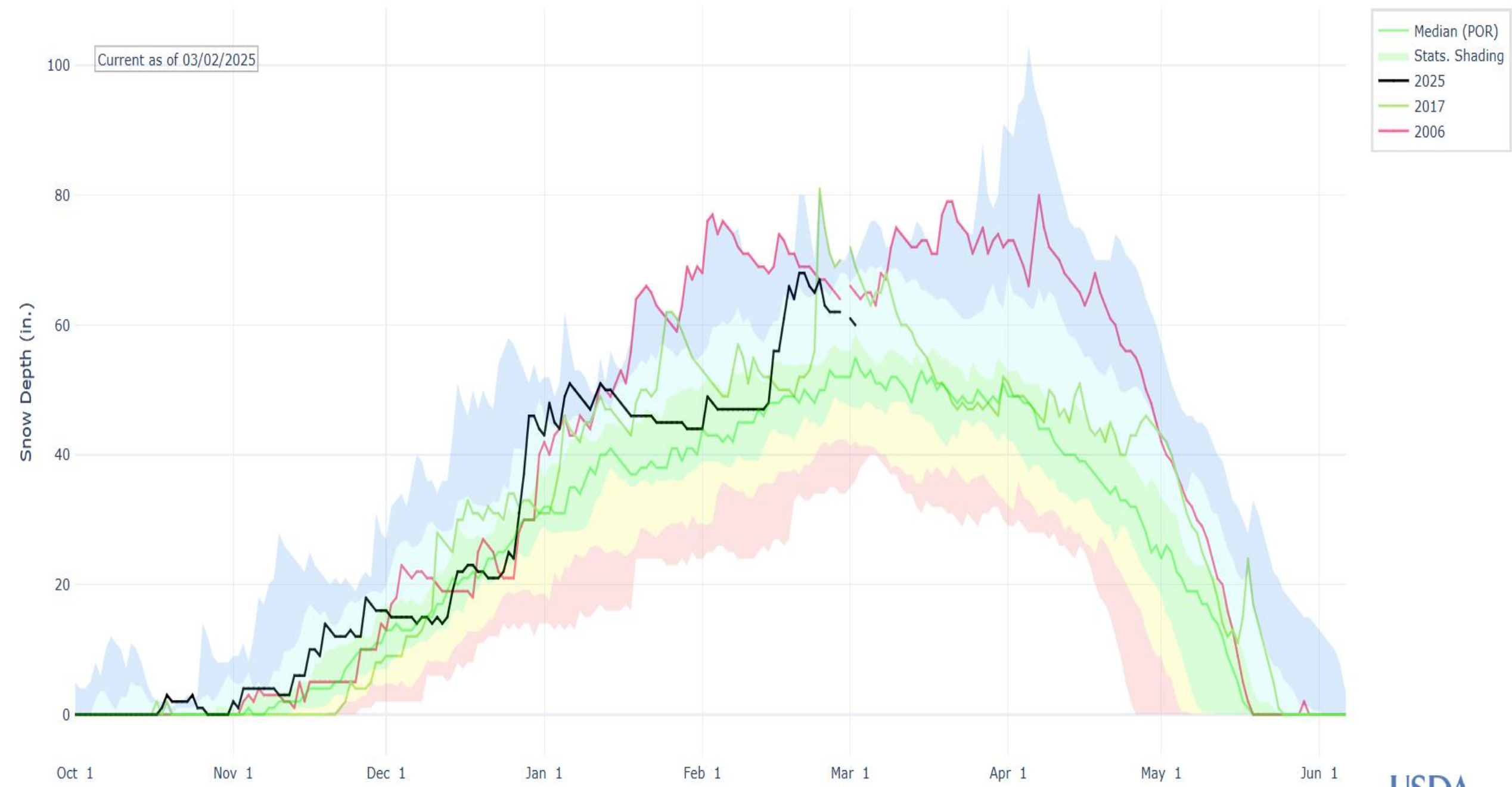
GALENA SUMMIT, ID (490) SNOW DEPTH



SOLDIER R.S., ID (769) SNOW DEPTH

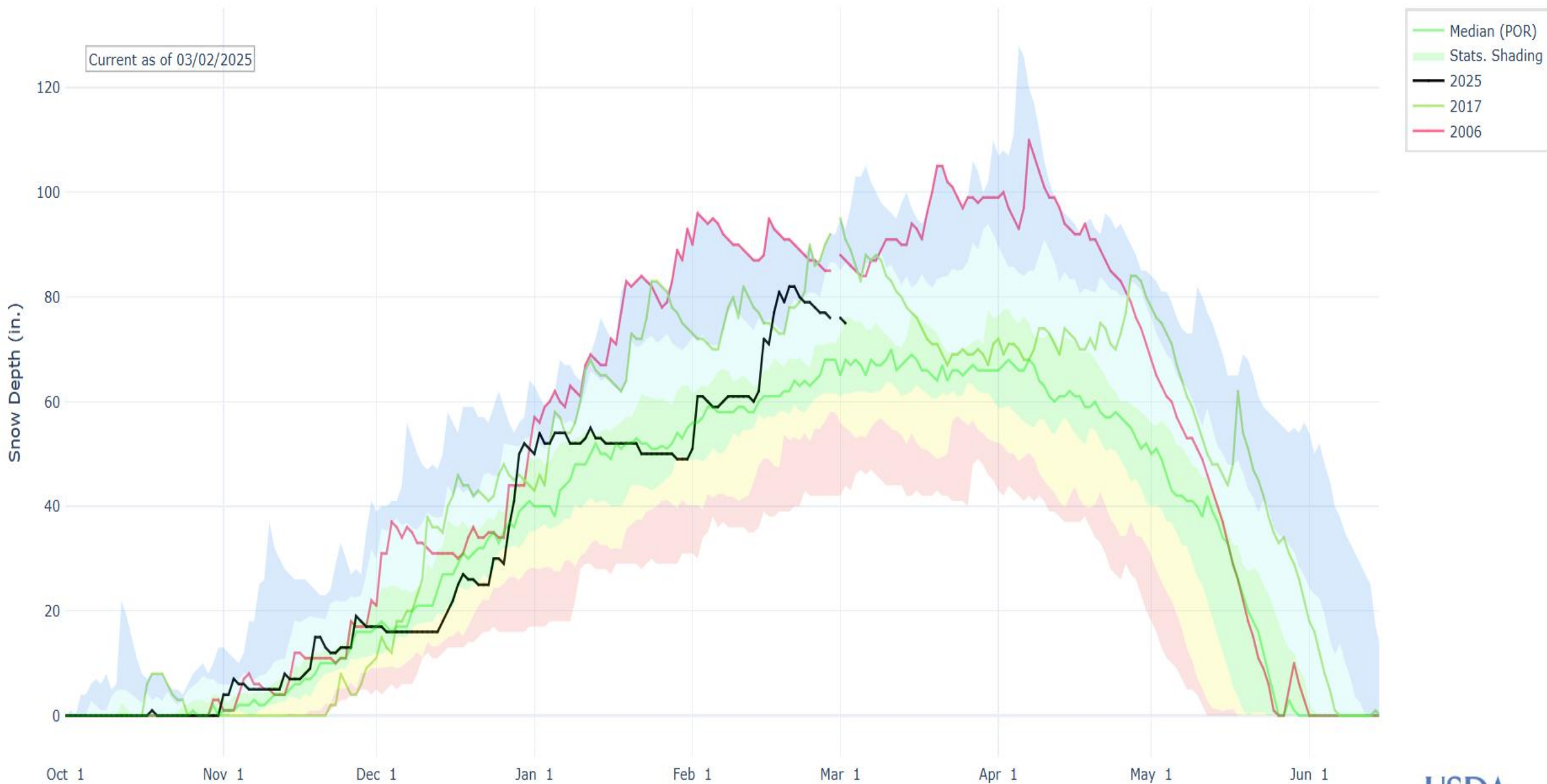


MAGIC MOUNTAIN, ID (610) SNOW DEPTH



HOWELL CANYON, ID (534) SNOW DEPTH

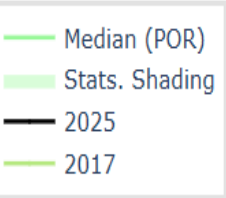
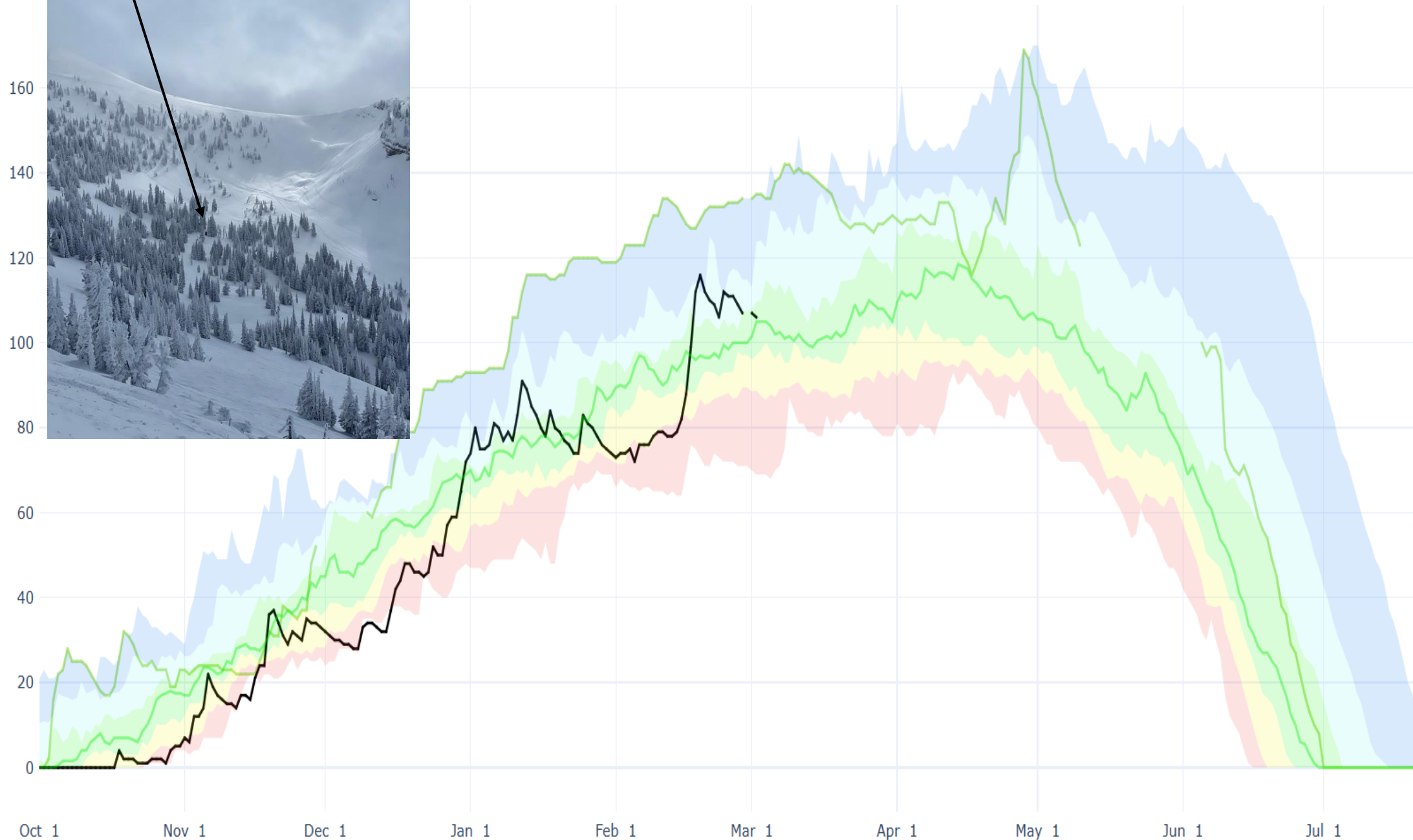
Current as of 03/02/2025



GRAND TARGHEE, WY (1082) SNOW DEPTH



Snow Depth (in.)



Upcoming Talks:

March 9 Sunday 1-2pm Idaho

<https://www.idahomuseum.org/event/snowpack-water-and-drought-whats-up-with-the-weather/>



IDAHO MUSEUM OF MINING & GEOLOGY

[HOME](#)

[GET INVOLVED!](#)

[LEARN](#)

[EVENTS](#)

[FIELD TRIPS](#)

[PROGRAMS](#)

[GIFT SHOP](#)

[ABOUT US](#)



[« All Events](#)

Snowpack, Water and Drought: What's Up with the Weather

March 9 @ 1:00 pm - 2:00 pm \$5

**March 12 Wednesday 6:30pm ish
Idaho Whitewater Association River
Predications**

<https://idahowhitewater.net/>

